

# Ellesborough

magazine



# A TROPICAL **EXTRA PALE ALE**



4.5%

Limited Edition



Sweet Citrus,  
Stone Fruit &  
Soft Mango

Regeneratively  
Grown Barley  
from the  
Waddesdon Estate

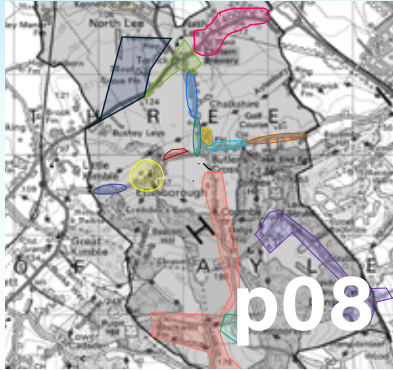
Extra  
Pale Ale



# CONTENTS

## Distributors

A team of volunteers keeping our community connected.



## Liz Norris

Her life was marked by generosity, empathy, humour and energy.



## The Trenchard museum RAF Halton

Displaying items that relate to the history of Royal Air Force Halton.



## Dunsmore update

Bluebell Walk and Bacon Butties took place.



- 03 Contents
- 04 Letters
- 06 What's on at Ellesborough Parish Hall
- 07 Local Events
- 08 Keeping the village magazine moving
- 10 Liz Norris
- 12 The Trenchard Museum
- 14 Church Services
- 15 St Peter & St Paul
- 16 Buckmoorend Farm
- 18 The King's Head Tours
- 19 The Russell Arms
- 20 Glow worms
- 21 Recipe
- 22 Dunsmore
- 24 Ellesborough Silver Band
- 25 Bucks Art Weeks
- 26 Great Kimble C of E School
- 27 The Chiltern Ladies
- 28 K.E.H.S.
- 29 Pyo at local Flower Farm
- 30 Chiltern Brewery
- 32 Llewellyn Kinch Energy
- 33 HS2 update
- 34 Florence Nightingale
- 35 Photo Competition
- 36 Parish Notes
- 37 Planning Applications
- 38 Puzzle
- 39 Adverts
- 54 Local Directory

Published quarterly for distribution from the first Saturday of March, June, September & December.

### Submission Guidelines for the Next Issue

Please submit copy for the next issue to Allan Westray at [edellesboroughmgz@gmail.com](mailto:edellesboroughmgz@gmail.com) by **1<sup>st</sup> August 2026**.

For articles, please keep the word count between **500 and 750 words**. Submissions should be in **Word format** with accompanying images in the **highest resolution possible (minimum 1MB)**.

### Advertising Enquiries

For all advertising inquiries, please contact Annabelle, Advertising Manager, at [ellesboroughadvertising@gmail.com](mailto:ellesboroughadvertising@gmail.com).

### Subscription & Distribution Enquiries

For any questions regarding subscriptions or distribution, please contact Janette West at [subsemgz@gmail.com](mailto:subsemgz@gmail.com).

Richard Jennings  
Chairman and editor

Allan Westray  
Features editor

Chris Gloster  
Design

Annabelle Hunting  
Advertising

Simon Fowler  
Finance

Judith Harper  
Secretary

Janette West  
Distribution

# YOUR LETTERS

## Chairman's Letter

Dear Readers

**We are looking for a volunteer to help manage the advertising space in the Ellesborough Magazine.**

This role would involve liaising with local businesses and organisations, arranging advertisements, and helping to support the continued success of the magazine as an important community resource.

The position would suit someone who is organised, friendly, and enjoys working with local people and businesses.

If you are interested in helping, or would like more information, please contact: edellesboroughmgz@gmail.com or one of the committee.

Wishing all our readers an enjoyable summer.



Richard Jennings

## Litter Pick & Clean up



**A big "THANK YOU " to all of the 24, keen and willing volunteers who supported the Village Clean up on Sunday 22nd March. It was another fantastic effort; whilst the working together contributes to improving the appearance of our village.**

Let's try to keep on top of it by meeting twice a year or just picking up what is outside your property.

**Judith & Janette**

## Ellesborough Ball 2027

### Save the date!

**Great news! The Ellesborough Ball will be back next year on Saturday 1st May, so make sure you save the date for a fabulous fun evening, celebrating with friends, family and neighbours.**

Guests will be welcomed with drinks on arrival and a three-course meal. There will be a fantastic live band to fill the dance floor, followed by the ever-entertaining Silent Disco. As always, the village will have the chance to raise money for local charities with a game of heads or tails, the raffle and a silent auction.

Whilst it seems like a long way off, if you'd like to attend then please register your interest for a table or tickets by emailing sales@bxball.org.

We hope to see you there!

**The Ball Committee**

## Dunsmore Correspondent



**I am delighted to hand over the Dunsmore news section of the magazine to Andy Charles.**

Please let him know if you have suggestions for articles, news items which might have been missed, and any wonderful photos of Dunsmorons and their activities.

**Lynne**

*See page 22 for more details*

## Macmillan Fundraising Coffee Morning

**This year I will be hosting my annual coffee morning event on Friday 25th September at Bonnybrook, Little Kimble.**

There will be a selection of stalls, plenty of homemade cakes, and a great opportunity to catch up with friends.

Not to mention the ever popular Raffle! Please do put the date in your diary.

I look forward to welcoming you between 10 and 12.30.

**Julie**

# Results of the bulb planting



In March, the daffodils made their first appearance along the path by the church, approval from Ellesborough Parish Council and planted by pupils of Great Kimble C of E School.

Tony Young, the church warden who passed away last year would have greatly appreciated it.

As we head into summer, the wild meadow flowers will bloom on the banks, creating a wonderful sight with the backdrop of Beacon Hill in the distance.

Helen Holman now manages the church wildflower meadow on behalf of the parish. If you can help with raking the mown straw in September to keep this special place thriving, please contact her at [helenholman@ellesborough-pc.gov.uk](mailto:helenholman@ellesborough-pc.gov.uk).

# Postcard from Canada of Beacon Hill



## **Good morning from Montreal, Canada!**

*This postcard was found among the personal effects of my great-great-uncle, Frederick Fraser (1870–1936). He worked for the British North Borneo Company and, after retiring, moved to Lynton, Devon, where he died at the age of 66.*

*I have no idea what his interest or association with Coombe Hill was, but we wondered whether the postcard might interest you or others in the parish.*

*Many thanks!*

**Helen Meredith**  
[helenmeredith@yahoo.ca](mailto:helenmeredith@yahoo.ca)

If you can help Helen Meredith with any information about her uncle and his association with Beacon Hill, please

email her at [helenpmeredith@yahoo.ca](mailto:helenpmeredith@yahoo.ca). Please also let the magazine know, as it will be of interest our readers.

# Ellesborough Village Summer Party

Saturday 20th June (Kings Birthday) at 12.00. See page 7 for more details.

# WHAT'S ON AT ELLESBOROUGH PARISH HALL

Our parish hall is a very busy venue throughout the week.  
This is the timetable of weekly activities.

If you would like to find out more about these activities, please see the contact details for each.



**Anna Taylor's Pilates –**  
**3 classes starting at 8am**  
(term time only)  
Contact Anna on 07901916264 or  
Email [annataylorpilates@gmail.com](mailto:annataylorpilates@gmail.com)

**Canine Rally Dog Training**  
**1:00 – 3:00pm**  
[www.btactrainingandagility.com](http://www.btactrainingandagility.com)  
mobile: 07824158912

**Groovelates –**  
**'Where disco meets Pilates class'**  
**5:30 – 6:30pm**  
Contact Ruth Towell to book  
on 07751879780 or  
Email [ruth.towell@gmail.com](mailto:ruth.towell@gmail.com)



**Colourwheel Art Classes**  
**morning and afternoon**  
Website: [Colourwheelartclass.co.uk](http://Colourwheelartclass.co.uk)

**Diamond Bridge Club**  
**6:30 – 10:30pm**  
Contact Barbara Barnes, Chairman  
Email - [barbara.barnes@me.com](mailto:barbara.barnes@me.com)



**The Pilates and Yoga Hub**  
**9:30 – 10:30am**  
[www.thepilatesandyogahub.co.uk](http://www.thepilatesandyogahub.co.uk)  
mobile:07966450458 or Email-  
[thepilatesandyogahubuk@gmail.com](mailto:thepilatesandyogahubuk@gmail.com)

**Qigong/TaiChi**  
**3:00 – 4:00pm**  
Contact Ruth Stephenson  
Email – [qigong@resms.co.uk](mailto:qigong@resms.co.uk)  
Mobile - 07354686606

**Hartbeat African Drumming class**  
**6:30 – 9:30pm**  
Website: [www.hartbeats.co.uk](http://www.hartbeats.co.uk)  
Email – [justine@hartbeats.co.uk](mailto:justine@hartbeats.co.uk)



**Anna Taylor's Pilates**  
**3 classes starting at 9:00am**  
Contact Anna on 07901916264 or  
Email [annataylorpilates@gmail.com](mailto:annataylorpilates@gmail.com)

**Taylor Made Education**  
**3:30 – 6:30pm**  
[www.taylormadeeducation.co.uk](http://www.taylormadeeducation.co.uk) or  
Email - [info@taylormadeeducation.co.uk](mailto:info@taylormadeeducation.co.uk)



**Colourwheel Art Classes**  
**morning and afternoon**  
Website: [Colourwheelartclass.co.uk](http://Colourwheelartclass.co.uk)

**Ellesborough Silver Band**  
**from 6:30pm**  
Website: [ellesboroughsilverband.co.uk](http://ellesboroughsilverband.co.uk)  
Contact Ray Lucas, Band Chairman  
07850339783 or Sue Wells, Band  
Secretary 07885531293.



There are also monthly activities on  
**Thursdays – Soundbath** (once a month)  
and **Disco Divas and Dad Dancers**  
(dates advertised separately).

**Village Coffee Mornings** are held in the  
Committee Room on the third Friday of  
each month (10:00 – 12:00). Simply drop  
in (using the green door not main doors)  
and enjoy a cuppa and chat.

Weekends are mainly booked for  
private parties, but a new dog training  
class will be starting on Sunday  
mornings in July, run by **Bark to Basics**  
**Dog Training Aylesbury**.

We also still have the **Book Exchange** in  
the entrance foyer of the hall – everyone  
welcome to pop in whenever the hall is  
open to pick up or drop off a book.



For other information or to enquire about a booking, you can  
check out our website – [ellesboroughparishhall.com](http://ellesboroughparishhall.com)

**Sally Withey**

On behalf of Ellesborough Parish Hall Management Committee

# LOCAL EVENTS

## Dunsmore Village

### Cream teas

Dunsmore Church  
2.30-5.00pm

14<sup>th</sup> June, 19<sup>th</sup> July  
23<sup>rd</sup> August

### Summer Ball

Dunsmore village green

Saturday 27<sup>th</sup> June

See pages 22 and 23 for all details

## Parish Council Meeting

Ellesborough Village Hall

Monday 20<sup>th</sup> July 2026 19.30

Monday 21<sup>st</sup> September 2026  
19.30

## Church services

Ellesborough Church  
see page 14

The Church of the  
Resurrection Dunsmore  
see page 26

## Florence Nightingale Midnight Walk

7.00 pm Saturday 20<sup>th</sup> June

Roman Park Hall Aylesbury.

## Pilates

Mondays &  
Thursday Mornings

Ellesborough Village Hall

## Qigong

Village Hall

Every Wednesday –  
see page 38

## Village Coffee & Cake

3<sup>rd</sup> Fridays of each month

19<sup>th</sup> June

17<sup>th</sup> July

21<sup>st</sup> August

## Chiltern Ladies

Stewart Hall Kimble –  
2.00pm

3<sup>rd</sup> June, 1<sup>st</sup> July, 5<sup>th</sup> August

## K & E Horticultural Society

Stewart Hall Kimble

First Tuesday Each Month,  
8.00pm

## Bucks Museum

Bucks Museum Aylesbury

The Saxons are Coming

Till 1<sup>st</sup> November

## Wendover Art Club

St Anne's Hall, Wendover

2<sup>nd</sup> and 4<sup>th</sup> Thursday  
of every month

7.30pm & 9.30pm

## Ellesborough Village Summer Party – Saturday 20th June

Ellesborough Village Hall (Kings Birthday) Starts at 12.00.

There will be a free bbq, the silver band  
are playing, and a dog show.

Photograph Competition Judging 12.30.  
See page 35 for more details.

# KEEPING THE VILLAGE MAGAZINE MOVING

**Every quarter, the Ellesborough Magazine arrives through letterboxes thanks to a remarkable team of volunteers who quietly give their time to keep our community connected.**

**While many readers enjoy the finished magazine with a cup of tea, few see the work involved in getting each edition printed, sorted, and delivered across the village.**

The distribution process begins as soon as the magazine comes back from the printers and my job is to carefully count and divide into rounds covering every part of the village. I then deliver the magazines to our volunteer distributors who deliver them by hand, often in all kinds of weather. Rain, wind, and dark winter evenings rarely stop the magazine from reaching local homes.

This network of volunteers plays an important role in village life. The magazine helps residents stay informed about local events, clubs, church services, school activities, fundraising efforts, and community news. For many people — especially those who are less connected online — the magazine remains an essential source of information and a welcome link with neighbours.

Distribution also brings its own sense of community spirit. Many volunteers enjoy the opportunity to walk around the village, meet residents, and contribute in a practical way. Even giving just an hour each month makes a real difference.

---

**Here are the thoughts of a few of our distributors:**

//

I've been delivering the Parish Magazine for many years now, I really can't remember how long. I volunteered because I really liked the lady who used to deliver the magazine to my house. I don't think I ever knew her name but she was always friendly and I admired her for giving up her time. So when I heard she was ill and couldn't manage it any longer, I thought I would step into her shoes. I did it for her as she inspired me. I walk across the field in front of my house and up to Orchard Barns. Sometimes somebody is at home and I have a quick chat. I then walk over to the Chiltern Brewery where I always stop for a chat. We usually moan about the road closures and the state of Nash Lee Road. I then move on towards the roundabout and sometimes there's somebody at home at Foxdene and we chat about how much they've done to their house.

Whilst delivering the magazine I've seen it transformed. I then walk up to Terrick Cottages. Nobody ever seems to be in there, although I do usually deliver on a week day. The only problem I have is a little dog that frightens the life out of me. I've never seen it, and assume its little because it sounds so ferocious and I hear it jump up to the door as

I put the magazine through the letter box. I'm really careful because I worry it's going to grab my hand and drag my arm through the letterbox. I take a few deep breaths and then drop in at the Terrick Garage where they are always friendly and again we moan about HS2 and the traffic and the state of the road. I then walk back home and drive the other way down Nash Lee Road to the houses on the border of the Parish. I have to drive as there's no safe place to walk along the road. The people at Midwinter House are really friendly and, over the years, I witnessed the improvements they've made to their house. The next few houses seem to have been affected by HS2 and I'm not sure if they are fully occupied but I leave the magazine anyway. The very last house, which used to be beautiful with a swimming pool and stables is now abandoned as it's right next to the HS2 works.

I really enjoy looking at people's gardens while I'm delivering the magazine, especially in spring and I've taken a few ideas away for my own garden.

**Liz Wren**  
Flint Cottage



My area is in two halves - close by which I can do on foot (Dropshort and Coombe), enjoying the views across the 100 acre field, and then further on along Missenden Road to outlying farms at the end of the parish. I occasionally do it all on foot or by bicycle in the summer, seeing the farm animals and sometimes wildlife, as well as doing a little foraging. I love to watch the changing landscapes of the parish through the year, and it's always good to bump into recipients from time to time, who greatly appreciate the magazine.

Best wishes  
**Fiona**



Hello to all in the parish and those on my round. I arrived with my wife and two daughters in 2017 - I suppose we're still 'the new ones' - and volunteered to give a little something back and meet some neighbours. I wear a suit for work, but my happy place is playing with old cars. On my travels if there's no-one around to chat, I occupy myself daydreaming what dusty old motors might be hiding behind the garage doors. You may also see us around with our whippet, give us a wave!

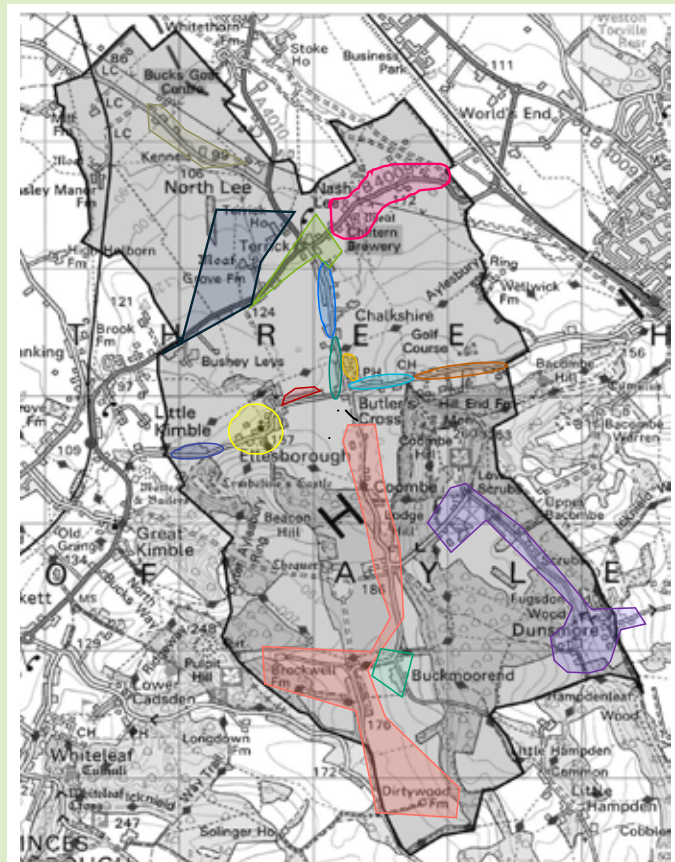
**James Oliver**

We would like to extend sincere thanks to everyone involved in the production and distribution of the magazine — from contributors and editors to printers and deliverers. Your efforts help keep our village informed, connected, and thriving.

If you would like to assist with distribution or learn more about how the magazine is produced, please contact the magazine team. New helpers are always warmly welcomed.

On the right, you will find the Ellesborough parish map which has been colour coded. In the area below the map, you will find the name of the distributors in different colours to correspond with the relevant area on the map which they (roughly) deliver to.

**Janette West**



Pat Burger	Les Condon	Steph Hares
Judith Harper	Elizabeth Hine	John Ladd
John Maling	Julie Oldroyd	James Oliver
Stephen Proctor	Jane Robins	Pam Sheppeck
Fiona Tchen	Ella Whalley	Liz Wren

# LIZ NORRIS

**Her life was marked by generosity, empathy, humour and energy. She was warm, kind and supportive to all those who knew her.**

**Liz died very suddenly in January this year. Her life was marked by generosity, empathy, humour and energy. She was warm, kind and supportive to all those who knew her.**

Liz was born on 2nd August 1951 and grew up in Bledlow Ridge in a home filled with love, high standards, and plenty of laughter. She trained as a nurse at Guy's Hospital, qualifying as a State Registered Nurse in 1973, a midwife in 1975 and later as a District Nurse. She spent a number of years as a ship's nurse on the QE2 and with Fred Olsen Cruise Lines. Nursing was more than a profession for her. It was a vocation and a constant throughout her life. During this time on the seas she met Peter, an entertainments director with Fred Olsen, whom she married in 1983. But very sadly the years that followed tested her in ways few of us can imagine. She lost her sister Jennie, then her adored father, and later her husband Peter, all within five years. Then mutual friends introduced her to Rex and they married in April 1992 starting their married life in Highcliffe.

The next chapter of her life was full of adventures, challenges and new purpose. Rex & Liz were offered the chance of taking over a croft in the far north west of Scotland and as crofts rarely came on the market, they thought it foolish to turn it down. The house hadn't been lived in for 2 years and needed quite a bit of work done on it, but the views were tremendous! Liz rose to the occasion and exactly one month after moving in they opened for Bed and Breakfast with their first guests booking in within a few hours of them putting up the vacancy sign.

After 5 years living in the amazing crofting community, Liz's Mother was diagnosed with cancer. The only decision that could be made was to return south to look after her mother. Soon, as a relatively experienced crofter, she found the ideal home for them in Ellesborough where they could continue to manage a small flock of sheep, and Rex would have a workshop.



Then began the process of integrating into the Ellesborough community. With the help of the 2 Richards (Pearce and Hares) they coped with settling in some of their Scottish flock to Buckinghamshire and Liz with her considerable nursing experience, started work in various nursing homes. The change from the rocky hills of Sutherland to the relative flat of Buckinghamshire was profound and shortly after found Liz thinking of other things with long eyelashes and appealing faces – alpacas. They were soon the owners of 4 of these intriguing creatures or long necked sheep as one of their neighbours called them. Some years later, and now with a herd of 20 or so, Liz was heavily into managing the process of converting fleeces into saleable yarn and hence the knitting shed came into being and inevitably the knitting group.

Her love for animals was most ardently shown to her dogs, as long as they were cavaliers, labradors, border collies, or a Hilda. Her midwifery skills, acquired years before, found new and unexpected applications in delivering puppies and lambs.

The dogs, nearly always in multiples, would compete for the prime position on her lap the instant she sat down. And if you were in her kitchen, drawn in by the aromas of the vast stews and wonderful roasts that she cooked, you might find yourself being told off without being entirely certain whether the rebuke was intended for you, the dogs or both!

Over the years, other things which Liz had become involved in locally were the church, choirs and Inner Wheel. The initial involvement with the church, St Peter & St Paul, was with the choir

## Liz and Rex celebrated her 50th birthday on the North Oxford canal, an adventure that soon led to them building their own boat named the Laughing Cavalier.



but over the years this increased with helping to organise events for fundraising, before the idea occurred to her of trying to take money off the walkers in the area by offering them tea, scones and cake in the summer, and soup and rolls in the winter. Her involvement increased again when she joined the PCC and then, in recent years with Tony Young's failing health, took on some of the church warden duties. But it was the teas that she really loved and over the years the amount of money raised increased considerably and lots of people became regular visitors.

As well as the church choir, Liz first joined the Aylesbury Festival Choir before moving to the Tring Choir which she sang with for quite a number of years.

Never one to say no, Liz was always willing to assist with things in the village

and especially helping to organise the various village commemorations that have been held over the years.

Liz's love of gardening and particularly sweet peas continues. Two days before she was taken ill, she casually remarked that she was going to sow last year's seeds that she had carefully stored in her freezer. These have now germinated and are already some 6 inches high. They are being very carefully looked after by Rex so as to be a reminder of her throughout the summer.

Liz and Rex celebrated her 50th birthday on the North Oxford canal, an adventure that soon led to them building their own boat named the Laughing Cavalier. Despite Rex having done all the building and fitting out of the boat, because Liz made the curtains and cushions, it was her boat!

Whenever she was on it she visibly relaxed and all her worries seemed to leave her. She was never happier than sitting somewhere on it with either some knitting or cross-stitch and a dog or 2 at her side or on her lap. They spent Christmas 2025 on it as it was something that Liz had always wanted to do. Christmas day was very relaxed despite cooking a full turkey lunch in the little galley. With no other distractions, visitors or commitments, it was everything that Liz had wanted.

Liz will be missed enormously by so many friends locally, her extended family and many friends but she will always be remembered for her generosity, humour and willingness to help.

**Thanks to Rex Norris & Annie Evans.**

AW

# THE TRENCHARD MUSEUM RAF HALTON – A SECRET GEM



**The museum aims to preserve and display items that relate to the history of Royal Air Force Halton.**

**RAF Halton has had a large presence in our community for over 100 years, its right on our doorstep, yet few of us know how it came to be or what its role really was.**

**Well, you can rectify this by visiting a fascinating little museum: The Trenchard Museum, right in the heart of Halton Camp**

The museum aims to preserve and display items that relate to the history of Royal Air Force Halton. Through its collection of old photos, documents and artefacts it provides the story of how RAF Halton came to be. From the very beginnings of 'Halton Camp', before the first world war, through the establishment of RAF Halton as we see it today

The museum was named in honour of the man, Lord Trenchard, who is regarded as the Founding Father of the Royal Air Force, and who also founded the Aircraft Apprentice scheme with which Halton has been synonymous.

Lord Trenchard learnt to fly in 1912 at age 39, apparently, he was not an outstanding pilot. However, his experience in the Royal Flying Corps, particularly in aerial reconnaissance, convinced him of the radical impact aviation would have upon land warfare. He developed improved tactics and strategic roles for aircraft during the war and was instrumental in setting up the RAF in 1918. As Chief of the Air Staff he fought for the survival of the RAF against a less than enthusiastic Army and Navy who could see no role for the new service. Lord Trenchard was convinced that aircraft technology would advance quickly and that pilots should be supported by skilled ground crews. In 1920 he inaugurated the Aircraft Apprentice system to provide the RAF with highly trained specialists. The No.1 School of Technical Training RAF Halton had its first intake in 1922 and continued through to 1993 with over 40,000 graduating.

The Trenchard museum is full of artifacts, personal items and

documents that chart Halton's history from the initial 'gentleman's agreement', between Lord Rothschild and Lord Kitchener for the Army to use his Halton Estate prior to WW1, through to its much-reduced role today. The tools made by the first apprentices remind us of how basic aeroplane maintenance was; a plumb line, a spirit level and pliers to tension the wing cables on the biplanes. A sewing kit and demonstration patch show how to patch a bullet hole in the fabric fuselage, and rudimentary guidance on engine maintenance. No wonder pilots referred to their fragile planes as kites.

Further displays show artifacts from the other roles at RAF Halton, Princess Mary's Hospital, a Dental Training establishment, Catering, RAF Police school and more.

Butlers Cross has a direct link to one of the young men piloting those rickety 'kites' over German lines in WW1 France. Harvey Godwin Mackintosh,



**Further displays show artifacts from the other roles at RAF Halton, Princess Mary's Hospital, a Dental Training establishment, Catering, RAF Police school and more.**

whose daughter Diana Strathon has lived in our village for over 50 years.

Diana's father learnt to fly at Kidlington, was commissioned into the Royal Flying Corp and sent to France in 1917 age 18. Learning to fly those early planes was perilous, with no safety equipment or protection, and accidents were common.

H G Makintosh fell from his plane and would certainly have been killed had his fall not been broken by a run of telegraph wires; an incredible escape.

His role in France was reconnaissance over German lines. Life expectancy was short, unreliable aircraft, ground fire and German fighter planes. On one mission he fought an air battle against the Red Baron, Von Richthofen in his red Fokker triplane. The Armstrong biplane would have been a poor match but apparently The Red Baron was out of ammunition and fired his pistol at H G Mackintosh, both survived the day. Von Richthofen was shot down and killed by ground fire days later.



H G Mackintosh survived the war, studied in Edinburgh and practised as a dentist. He served again in WW2 as Squadron Leader with the Air Training Corps teaching Polish airmen to fly.

The ground crew keeping H G Mackintosh flying would most likely have included personnel from Halton.

*Entry to the museum is free, all visits must be booked in advance and require basic security to allow access onto the campus.*

*Full details at <https://www.trenchardmuseum.org/museum>*

# CHURCH SERVICES



## St. Peter & St. Paul Ellesborough

### June

Sunday 7th	10.45	Songs of Praise
Sunday 14th	10.45	Parish Communion
Sunday 21st	10.45	Matins (BCP)
Sunday 28th	10.45	Patronal Communion

### July

Sunday 5th	10.45	Songs of Praise
Sunday 12th	10.45	Parish Communion
Sunday 19th	10.45	Matins (BCP)
Sunday 26th	10.45	Parish Communion

### August

Sunday 2nd	10.45	Songs of Praise
Sunday 9th	10.45	Parish Communion
Sunday 16th	10.45	Matins (BCP)
Sunday 23rd	10.45	Parish Communion
Sunday 30th	10.00	Benefice Holy Communion <i>To be held at St. Nicholas, Great Kimble</i>

Please note that we are now serving afternoon teas and cakes every Sunday afternoon and Bank Holidays from 2pm to 5pm.

Do please join us for wonderful homemade cakes and a chat.



## St. Nicholas, Great Kimble

St. Nic's Kids services:

- Sunday 21 June
- Sunday 19 July



## The Church of the Resurrection Dunsmore



See page 23 for more details

# ST PETER & ST PAUL – PATRON SAINTS OF OUR CHURCH IN ELLESBOROUGH

**On Monday 29 June the Church of England (along with many other churches) remembers the apostles St Peter and St Paul, the two saints after whom our church here in Ellesborough is named.**

**Both are titans of the early church and were instrumental in bringing many people to faith – there is a rather intimidating (for preachers, at least) passage in the Book of Acts where we are told that as a result of one of Peter’s sermons about three thousand came to faith. Sadly, none of my sermons has ever been that effective! But if we look at from where they start, both Peter and Paul are an odd couple to have been so instrumental in the growth of Christianity.**

We first encounter Peter as a fisherman, albeit at that point he is called Simon: Jesus renames him Cephas. It is about mid-way through Matthew’s Gospel that Jesus explains this play on words saying ‘Simon...you are Peter, and on this the rock I will build my church.’ Cephas is the Aramaic word for rock or stone, which was translated into Greek as *petra* (πέτρα) from which we get the word petrified (to make rock-like) and the name Peter. But time and again, Peter is far from being rock-like: his behaviour instead being very rocky, or unstable. Often one of the symbols by which Peter is known is the cockerel, remembering that after promising undying loyalty to Jesus, he melts into the crowd and denies even knowing him, not once but three times before the cock had crowed to herald the dawn. And there are many other occasions where we hear that Peter just doesn’t get it.

Paul’s start is, if anything, worse. We first meet him at the stoning to death of the first Christian martyr, Stephen, where we are told that Paul (called Saul at this stage) looked after the coats of those who did the stoning. We are told that Saul approved of the killing of Stephen, and he went on to persecute the early church in Jerusalem and then asked the authorities for permission to go to Damascus to persecute the early believers there. And on his way he has his ‘Damascus Road experience’ and all changed for him.

Both Peter and Paul had very unpromising starts as titans of Christianity, and yet Jesus saw their potential and enabled them both to develop it to the full. And both went on to not only share the faith with a great many people, but also to remain faithful to Jesus even in the face of death. Tradition has it that Paul was beheaded and Peter crucified upside down (which is why another symbol for him is the inverted cross). Despite their unpromising starts, Jesus saw their potential and didn’t give up on them. I wonder how often in our society today we are quick to dismiss those who have made a mistake and call for their dismissal or punishment, ignoring whatever further potential they might offer. I wonder what would happen if instead of focusing on a person’s mistakes we focussed on, and nurtured, their potential?



If you would like to hear more about Peter and Paul, we will be particularly remembering them at our Patronal Eucharist on Sunday 28 June at 10.45am in the church of St Peter and St Paul, Ellesborough. You will be very welcome to join us.

**Revd Matthew Routledge**

Rector Ellesborough,  
the Kimbles and Stoke Mandeville.

[revroutledge@gmail.com](mailto:revroutledge@gmail.com)



Visit a farm & discover  
the world of farming!

# 7<sup>th</sup> June 2026

## Buckmoorend Farm

Butlers Cross | HP17 0UT

### 11am to 4pm

COME ALONG TO ENJOY A FUN FAMILY DAY AND LEARN ABOUT  
EVERYTHING THAT GOES ON BEHIND THE SCENES AT BUCKMOOREND FARM!

**DISCOVER** the world of animals, crops and machinery

**TASTE** our delicious produce in our farm shop and kitchen

**ENJOY** some great produce from our local suppliers

**WATCH** a butchery demonstration from our onsite butchers

**TAKE** part in fun activities for young and old

**MEET** our amazing animals

**Buckmoorend**  
farm shop | butchery | kitchen

[www.buckmoorendfarm.co.uk](http://www.buckmoorendfarm.co.uk)



[www.farmsunday.org](http://www.farmsunday.org)

@Openfarmsunday

LEAFopenfarmsunday

openfarmsunday

# BUCKMOOREND FARM



What a glorious Spring we are enjoying here at Buckmoorend.



**After a particularly soggy start over Winter the carpets of bluebells are certainly something to behold this year. Spring has most definitely sprung and the colours surrounding us are a true joy.**

We have been keeping super busy on the farm calving, lambing and planting. We have welcomed nearly all of our Spring calves with 6 cows remaining. All of our cows have returned to their happy place in the sunny lush fields around Buckmoorend after overwintering in our cowshed and following a successful TB testing. You can spot many of the newborns frolicking in the fields near Great Kimble.

This week we are excited to welcome a new Beef Shorthorn bull onto the farm. At just 2 years old his higher fertility and stamina will hopefully serve to improve conception rates and lead to a more compact calving season. This is a positive step in good herd management and long-term planning. Introducing new genetics can enhance desirable traits such as growth rates, temperament and overall health. Over time this contributes to a stronger more productive herd ensuring both sustainability and better performance on the farm.

We have just finished lambing and returned to a normal sleep routine! After a positive scanning rate of 180% we unfortunately didn't have as

successful a lambing season as last year. In the main this appears to have been due to last year's dry Summer and this year's wet Winter detrimentally affecting the grass quality and nutrients within. This has resulted in weaker than average lambs and ewes with lower quality milk. Put together this combination is not ideal and has sadly caused a greater loss rate. Moving forward we can absolutely learn from this and work towards a greater season next year.



In the farm shop we have been celebrating our 10-year anniversary and are very much looking forward to our first Cycle Event being held at the end of May to help mark the occasion. We hope this to be the start of more collaboration with OTEC Bikes and Chiltern Safaris to showcase the best of the Chilterns. We have also introduced a new delicious sausage variety, Smoky Bourbon, and offered our signature Beef Belgravia at Easter. Watch out for further celebratory promotions throughout the year.

We are also working hard in preparation for Open Farm Sunday on 7th June. This will be our 6th time of hosting this fabulous event and we can't wait to welcome you onto the farm to learn about all that happens behind the scenes, meet our wonderful animals and local producers and get involved in some countryside fun.

We would like to thank you for all your loyalty and support over the past 10 years. We could never have imagined we would have grown to where we are now when we first opened our doors in 2016 and are so grateful for all your visits, smiling face and words of encouragement. Farming is at the core of what we do and to be able to now genuinely offer the full trail from farm to fork is so important to us. Through the lovely relationships we have built this is so much more than a business to us and we're proud to be part of this wonderful community.

We hope to see you soon!

As always, thank you for all your support.

**Steph, Daniel & all the team at Buckmoorend Farm**



THE  
**KING'S HEAD**  
EST 1455

FROM THE CHILTERN BREWERY

# TOURS



*More than a pub*

DISCOVER THE STORIES OF  
THE KING'S HEAD.

[www.kingsheadaylesbury.co.uk](http://www.kingsheadaylesbury.co.uk)  
Facebook. @kingsheadaylesbury  
Twitter. @Kings\_Head  
Instagram. @kingsheadaylesbury



# UPDATE FROM **THE RUSSELL ARMS**



**For those who haven't had the chance to try it yet, we've introduced a tapas-style Modern British menu.**



**It's been a very busy few months at The Russell Arms, all made so much easier recently by the longer days and the brief glimpses of sunshine we've been seeing.**

In our last piece, we mentioned that live music was being planned for the months ahead. We're pleased to say it is now well and truly under way...and has quickly become one of the highlights of the week.

Every Saturday, from 6pm until 8pm, we host live acoustic music in the bar, with a rotating line-up of local artists. The slightly earlier start means you can pop in for a set before the evening really begins, or stay on and make a longer night of it. If there's a particular style of music you'd love to hear, whether that's acoustic folk, jazz, blues or something else entirely, do let us know and we'll do our best to track someone down.

Our new menu has now launched and the feedback so far has been overwhelmingly positive. For those who haven't had the chance to try it yet, we've introduced a tapas-style Modern British menu, designed to allow far more flexibility in how you order, from a light bite to a proper feast. If you've not tried the new menu yet then get booked in! We'd love to know what you think too.

Our new menu has been slightly adapted specifically on a Saturday to complement our live music, creating the Saturday

Night Live Menu, which adds a bottomless drinks option (alcoholic or non-alcoholic) for a genuinely good-value and entertaining night out.

So how can you support your local pub in the coming months?

- Get booked in for Sunday lunch - with Father's Day falling on 21 June and plenty of summer Sundays to enjoy, our busier dates are filling up fast.
- Don't forget Thursday's - every Thursday is Steak Night, with great-quality meat at fair prices and a brilliant midweek evening out.
- Come along to Quiz Night - we'd love to see more locals at our monthly Quiz Night, held on the last Wednesday of every month. The next one will be on Wednesday 24 June.

For the most up-to-date information on menus, events and live music line-ups, please keep an eye on our website, particularly the Events page, which is updated as new details are confirmed.

Thank you for your support...The Russell Arms exists because of this village and we look forward to welcoming many of you through the doors over the summer.

**From the team at The Russell Arms**

# GLOW WORMS

We are very privileged to live with glow worms in Butlers Cross, it is the perfect place to encounter them.



Glow Worm



Local Distribution - NBN Atlas 2026

**They are not easy to find and patience is needed to spot them on our path verges at nightfall during June and July.**

Glow worms are wingless female beetles. The light they emit is unmistakable, very like a dim lime-green LED. The glow attracts male glow worms flying past in search of a mate. Once mating has taken place, the light is extinguished and the fragile three-year life cycle of the next generation begins

During the first and second years, from egg to pupae, the larvae feed on much larger snails and slugs. They are usually found in short grass and scrub along the edges of walls or bushes — places that also attract snails.

What makes Butlers Cross special is the long-established glow worm population spilling over from the SSSIs at Coombe Hill, owned by the National Trust, and Beacon Hill managed by Daniel Hares of Buckmoorend Farm.

The places where I have seen glow worms include the path verge from Ellesborough Village Hall along Missenden Road, and around the edge of Ellesborough churchyard. Watching glow worms is a special way to connect with the lives of other beings.

In the dark of the churchyard, during President Trump's first visit, I was approached by Chequers Police and asked what I was doing.

"Looking for glow worms," I replied.

"That's the first time I've heard that one," came the response — before I was escorted back to our house. In this case, the other beings I encountered were entirely benign.

**Richard Jennings**

**The places where I have seen glow worms include the path verge from Ellesborough Village Hall along Missenden Road, and around the edge of Ellesborough churchyard.**

More information is available:

- i) YouTube "Glowing Glowing Gone, The Plight of the Essex Glow Worm" - Dr Tim Gardiner 2025.
- ii) National Biodiversity Network Trust. NBN Atlas > Glow-Worms

# RECIPE:

## CHILLED GREEN GARDEN SOUP

A chilled soup using fresh seasonal vegetables is perfect for a summer evening, barbeque or lunch.



This recipe is not only light and refreshing, but also nutritious and full of flavours. For this recipe you will need a blender.

### Ingredients

- 100g/3½fl oz piece of sourdough baguette, crusts removed
- 4 pickled gherkins, plus 100ml/3½fl oz pickle liquor
- 2 bunches watercress
- 8 ice cubes
- 1 courgette
- 1 cucumber
- 1 iceberg lettuce
- 16 fresh pea pods, shelled
- ½ bunch chives
- ½ bunch dill
- 100g/3½fl oz yoghurt
- 4 tbsp olive oil, plus extra for drizzling
- 8 slices sourdough baguette
- 1 whole Edmund Tew cheese
- salt and freshly ground black pepper
- borage flowers and fresh soft herbs, to garnish (optional)

### Method

1. Tear the crustless bread into pieces and soak in the pickle liquor until it starts to soften.
2. Wash the watercress and put in a bowl with the ice cubes.
3. Grate the courgette and roughly chop the cucumber, gherkins and iceberg lettuce.
4. In a large bowl, mix the peas, chives, dill, yoghurt, 2 tablespoons of oil, the soaked bread, chopped vegetables and watercress.
5. Transfer to the blender one handful at a time and blend until smooth. You may not need to do this in batches depending on the strength of your blender. If it isn't very smooth you can pass the soup through a sieve into a clean bowl before serving. Season to taste and place in the fridge to chill or until you are ready to serve.
6. Slice the baguette thinly into croûtons. Place a frying pan on a medium heat or on the barbecue. Drizzle the bread with the remaining olive oil, salt and pepper. Toast until golden and crunchy.
7. Portion the soup into bowls and decorate with a drizzle of olive oil, cracked black pepper, borage flowers and any soft herbs from the garden. Serve with a pile of croûtons and the cheese alongside.

If you have a favourite seasonal recipe and would like to share it through the magazine please contact: Judith Harper – [jd25.harper@gmail.com](mailto:jd25.harper@gmail.com)

# Dunsmore update

## SUMMER'S HERE!

### Dunsmore Correspondent – Welcome

A huge welcome to Andy Charles, Dunsmore's new correspondent to the Ellesborough Magazine. Most of you will know him, but a brief background might be helpful to everyone in the village.

Andy and his partner, Tod Weller, moved from London into Well Cottage in November 2019, just in time to be locked down by COVID. But this is a great place for walks, and it was an opportunity to explore Dunsmore's lanes and footpaths, free of congestion.

An actor and theatrical agent, Andy's had a busy career in London's theatre scene. He took on a new persona as psychotherapist, via the internet and in person, before becoming curious about the further potential benefits of hypnotherapy. Once qualified, Andy found that this behavioural approach was beneficial to his clients. (As speaker at a recent Langford Lovell Lecture, Andy assured attendees that there was no swinging watch involved.)

The family in Well Cottage has expanded to include two cats and one dog. Jasper is often seen on walks in the village trying to dictate his own directional preferences.

So, I am delighted to hand over the Dunsmore news section of the magazine to Andy Charles. Please let him know if you have suggestions for articles, news items which might have been missed, and any wonderful photos of Dunsmorons and their activities.

Lynne



### Our annual Bluebell Walk and Bacon Butties took place on Sunday 26th April. It was great to see so many people turn out for the event.

#### Time to enjoy our outside space.

This is my first Dunsmore update and before I get into it, I would like to personally thank Lynne Ladd who has brilliantly reported Dunsmore's news for over 20 years. The village is so grateful for all her work and I'm very aware that I've got big shoes to fill!

Spring kicked off with **Quiz and Chips** on 14th March, hosted by the inimitable quiz masters Dave Marshall and Julian Hamer. Lots of laughs were had amid the very challenging questions and the evening was won (by a landslide) by the Paper Mates.

Later in March our **Village Spring Clean and Litter Pick** got us out making sure the village was spick and span. It's so demoralising to see the litter that's jettisoned from cars but nonetheless, we're now tidier until the next time.

For all you dog lovers out there, March is of course Crufts month. And we are very proud to have a winner in our village. Maud, a two-year-old Grand Basset Griffon Vendéen, owned by Anita Roberts, has already won numerous



qualifying shows (which allows her to be called a Champion forever) and on entering Crufts this year won Best of Breed!

She was brilliantly shown by Claire Cooper, and we are all so delighted for Anita, Claire and the adorable Champion girl herself.

# THE CHURCH OF THE RESURRECTION

**Our explorers saw many swathes of beautiful blue – we really are so lucky to be able to see this wonderful, natural phenomenon.**



Spring also gave us a time to reflect on Ros Wood who passed away in April 2025. A beautiful stone by the village church commemorates her and her beloved husband Tony. Ros's family came and laid flowers to mark the one-year anniversary.

Our annual **Bluebell Walk** and Bacon Butties took place on Sunday 26th April. It was great to see so many people turn out for the event and our intrepid Chris Mitchell led the village into the woods to see the best bluebell displays. Our explorers saw many swathes of beautiful blue – we really are so lucky to be able to see this wonderful, natural phenomenon. Much drinking of tea and eating of butties happened afterwards.

## Coming Events

Saturday 27th June: **Summer Ball on the Village Green**, run by Judith and Andy Stancombe.

Sunday 23rd August: **DVHA Cream Teas**

Check the village notice board and your emails for additional information. Volunteer assistance is always gratefully accepted at all these events. Come and enjoy!



**I am writing this at the very beginning of May before our plant sale and first cream tea. At the moment the weather forecast for next Sunday is not looking particularly good but I am hoping it is unduly pessimistic and in the next issue I will be able to give a glowing report of the event.**

We will then have two more cream teas on Sunday, 14th June and Sunday, 19th July, both to raise funds for the church. There will also be a cream tea at the church on Sunday, 23rd August but this will be to support DVHA funds.

All the teas start at 2.30pm and run until 5.00pm, there is parking near the church and gazebos to protect you from the sun or showers.

The cakes are all homemade by our loyal team in the village and we regularly receive appreciative comments about their quality.

If you have been to our teas before, can you please carry on supporting us and if you are new to the event we will be delighted to welcome you.

## Cream Teas at Dunsmore Church



*Truly Scrumptious Cream Teas with Homemade Cakes & Scones! Free refills of tea & coffee.*

*Do come along and join us and enjoy our friendly Chiltern village—cash preferred.*

*2.30—5.00pm*

*Sunday, 10th May 2026  
Sunday, 14th June 2026  
Sunday, 19th July 2026  
Sunday, 23rd August 2026*

*Proceeds go to the maintenance of our lovely village church*

# ELLESBOROUGH SILVER BAND

## An Afternoon of Music, Tea, and Community at Ellesborough Village Hall



**On Sunday 17th May, Ellesborough Village Hall was filled with music, laughter and community spirit as the wonderfully talented Ellesborough Silver Band entertained a packed audience with a delightful afternoon concert.**

Running from 3pm to 5pm, the concert showcased not only the band's impressive musicianship, but also the warmth and friendliness that makes village events so special. This marked the first time the band has performed outside of their much-loved Christmas Concert, and what a tremendous success it was.

The programme offered something for everyone, from stirring marches and film favourites to touching solos and toe-tapping classics. The afternoon opened energetically with The Cossack March, immediately setting the tone for a lively and uplifting performance.

The audience thoroughly enjoyed the ever popular Hey Jude, while I'm Gonna Be (500 Miles) had many smiling and quietly singing along.

Several featured solo performances highlighted the exceptional skill within the band. Karen's euphonium solo in Watching the Wheat was beautifully played, full of warmth and expression, while Jane's moving baritone performance of Slipping Through My Fingers captured the audience completely. Charlie dazzled with the soprano feature Valdres March, demonstrating remarkable control and confidence, and Philip's rendition of Make Me Feel My Love on the Eb horn brought a wonderfully gentle and lyrical moment to the afternoon. Katie's flugel feature in Love Story was another audience favourite, beautifully performed with great sensitivity, while Ray's euphonium solo in Rondo showed tremendous dexterity and musical flair.

The band also demonstrated their versatility through a varied programme that included the swing-inspired Miller Magic, the fun trombone feature Dem Bones, and dramatic film music from Pirates of the Caribbean and Jurassic Park. Younger audience members especially enjoyed the playful Wallace & Gromit theme, while Lord of the Dance and Lincolnshire Poacher added traditional favourites to the mix.

The concert closed, fittingly, with the cheerful Bring Me Sunshine, leaving the audience smiling and applauding enthusiastically for more.

Of course, no village hall event would be complete without refreshments, and guests were treated to a wonderful selection of gorgeous homemade cakes alongside tea and conversation during the interval. The raffle proved hugely popular too, with so many generously donated prizes that it seemed to take almost as long to draw as one of the musical sets!

The afternoon was a wonderful example of local talent and community spirit coming together, and enormous thanks go to the band members, volunteers, cake bakers, prize donors and everyone who helped make the event such a success.

If you missed this performance, there is another opportunity to hear the Ellesborough Silver Band soon. Their next appearance will be at the Ellesborough Parish Party on 20th June, so do come along and join us again for another delightful afternoon of music, tea and cake.

Best wishes

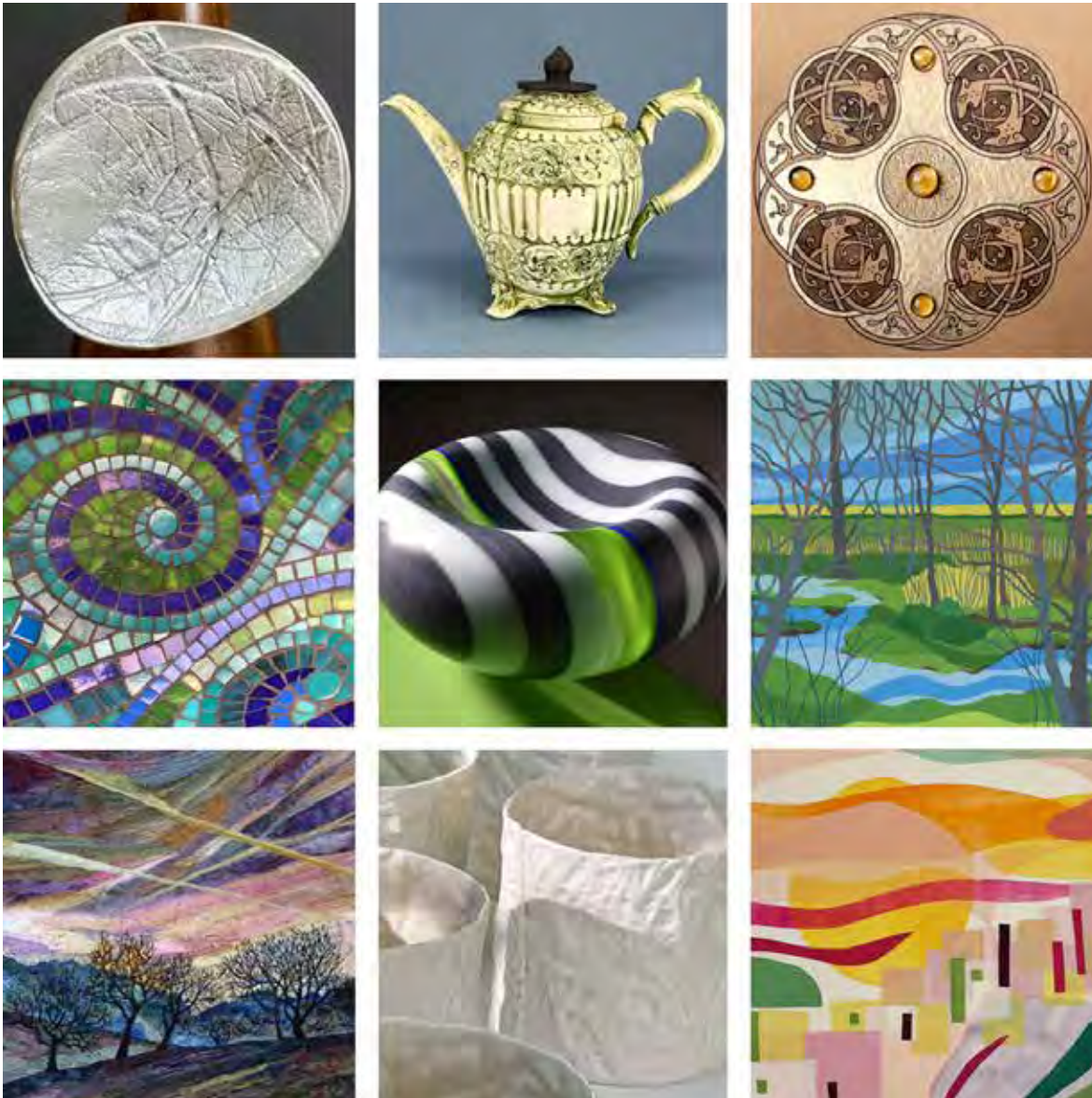
**Debbie Bird**

# BUCKS ART WEEKS

## AT ST DUNSTAN'S



An exhibition showcasing a group of established artists and makers in beautiful, medieval St Dunstan's Church, Monks Risborough.



Nine artists and makers showing paintings, print-making, illuminations, textile art, paper sculpture, turned vessels, ceramics, mosaics and jewellery.

For photos and more info, see [www.artatstdunstans.blogspot.com](http://www.artatstdunstans.blogspot.com)

Home-baked cakes and drinks on offer throughout the show. On Saturday and Sunday afternoons, the church serves cream teas.

Art at St Dunstan's is open:

**Saturday 6 – Sunday 14 June**

**Saturdays and w/days 10-4, Sundays 12-4.**

St Dunstan's Church, off Mill Lane, Monks Risborough, BUCKS HP27 9JE. Please park on Mill Lane.



## The past couple of months at our school have been filled with energy, growth, and a renewed sense of purpose.

Since March, we have been actively bringing our new values and vision to life, and it has made a noticeable difference across the whole school community. A strong focus on collaboration and ambition has shaped both our learning and our relationships, creating an environment where pupils are encouraged to support one another while aiming high in everything they do.

As the weather has improved, we have taken full advantage of opportunities to move learning beyond the classroom. Outdoor lessons have brought subjects such as science and maths to life in exciting and practical ways. Whether measuring distances on the playground, exploring natural habitats, or applying problem-solving skills in real-world contexts, pupils have responded with enthusiasm and curiosity. These experiences not only deepen understanding but also make learning more memorable and engaging.

Trips have also played a key role in enriching our curriculum. Over the past few weeks, pupils have enjoyed a range of visits designed to extend their knowledge and broaden their horizons. These outings provide valuable opportunities to connect classroom learning with the wider world, helping children to develop confidence, independence, and a sense of adventure.

In physical education, we have been proud to offer new and inclusive experiences. Pupils recently took part in wheelchair sports, which encouraged teamwork, resilience, and empathy while developing new skills. Another

highlight has been the introduction of gaga ball, a fast-paced and fun game that has quickly become a favourite and our pupils are trying to raise money for their own arena! These activities not only promote physical health but also reinforce the importance of inclusion and trying something new.

A particularly meaningful achievement has been our Year 5 and Year 6 pupils completing first aid training. This is an invaluable life skill, equipping children with the knowledge and confidence to respond in emergency situations. It is a wonderful example of learning that extends far beyond the classroom.

Looking ahead, there is plenty to be excited about for the remainder of the summer term. Residential trips will offer unforgettable experiences and opportunities for personal growth, while sports days promise friendly competition and school spirit. Transition activities will help prepare pupils for their next steps, ensuring they feel confident and ready for new challenges.

We are also looking forward to our summer fayre, which will bring the whole school community together for a day of celebration and fun. Events like this highlight the strong sense of community that underpins everything we do. We invite the whole community – please save the date: 4th July!

Overall, it has been a fantastic period for our school. By embracing our values of collaboration and ambition, and by making the most of every opportunity, our pupils continue to thrive. We are excited to see what the rest of the year will bring!



AMBITION



RESPECT



RESILIENCE



LOVE



COLLABORATION

# THE CHILTERN LADIES

The March meeting was our A.G.M. 65 members enrolled. There were also two guest - who may attend two meetings without charge before being asked if they would like to join.

Margaret Couling explained the voting system and Mrs. Annie Adams was returned as President. All the committee were reinstated with the welcome addition of Dee Powell.

Annie told us some of the things we have to look forward to including visits to Ascott House and gardens, Hatfield House, and a holiday in North Wales - when we will travel by train to the summit of Mount Snowden, enjoy a boat trip to Puffin Island and a day trip to Portmeirion.

Bev Russell, our secretary, gave an interesting and informative report on our speakers, our outings and the workshops we have enjoyed during the past 12 months.

Sue Stewart, our treasurer, assured us our finances were in good heart and that we had collected £1,000 for our Charity of the Year, Hearing Dogs for Deaf People. Our subscriptions would remain at £25 for the 4th year. (W.I. subscriptions are raised to £54 this year.)

Elizabeth Hine spoke about the catering events we had managed, and hoped more members would join the team. She thanked, most sincerely, all her Bakers and Sandwich Makers!

A delicious afternoon tea was prepared and served by the committee. It was a most enjoyable afternoon.

---

A pretty arrangement of white bluebells was on The President's table at the April meeting.

We were given the date of the next coffee morning at Orchard View, Meadle. Most members stay on to enjoy lunch, some husbands join us.

The London group are planning a visit to Battersea Power Station to see the Ramses and the Pharaoh's Gold exhibition, and later to the British Museum to see the Bayeux Tapestry.

During the tea break, we enjoyed hot cross buns and were given an Easter egg. There was time to visit the book stall and the produce table where there were pretty home made Easter

cakes, scones and puddings for sale, jams, marmalades and new laid eggs.

The speaker was Mervin Edwards a specialist firearms officer with Thames Valley Police. An excellent speaker who alternately scared us with stories of the IRA bombings in London, and then with a happy story about Margaret Thatcher visiting the officers in their station on the Chequers Estate - carrying a Christmas cake for their tea on Christmas afternoon.

---

At the May meeting the President gave us our luggage labels ready for our holiday and confirmed that we would be picked up from Stewart Hall.

The London group are planning a visit to Buckingham Palace, The King's Gallery, to see the Royal Collection of Her Majesty Queen Elizabeth's clothes, 'Her Life In Style'.

Unfortunately, our speaker did not arrive. It was to be someone from the Hearing Dogs charity, when we expected to present them with our cheque for £1,000.

Our President, Annie, told us the story of her first job at a Methodist children's home in Horsham, Sussex. With one other lady she had the care of 20 babies, mostly placed by unmarried mothers, how sad they always were to give their babies away. She said, for her, this was always compensated for by the happy faces of the parents who adopted the children.

Sally Bickerton then took over and explained to us that she herself had been given up for adoption as a baby, and was chosen by her new family because of her red hair. When she retired, she had time to trace her first family, with the help of NORCAP, who provide support services for adopted people over 18 years of age. She was delighted to discover that she had eight siblings, and has become best friends with some of her sisters. A happy ending.

We all have stories to tell. Chiltern Ladies, take note, you never know when you may be asked to tell your story!

---

**THE CHILTERN LADIES MEET ON THE FIRST WEDNESDAY OF THE MONTH AT STEWART HALL, LITTLE KIMBLE AT 2 PM. VISITORS ALWAYS RECEIVE A WARM WELCOME.**

# KIMBLE AND ELLESBOROUGH HORTICULTURAL SOCIETY

## Your Local Gardening Club



**Our monthly meetings are held at Stewart Hall.**

If you are not a member but would be interested in coming to any meetings please contact Colin Ells (Chairman) at [colin.kehs@outlook.com](mailto:colin.kehs@outlook.com) before attending.

Please see our website for any updates.

### June



**Garden Design**  
**Tuesday 2nd:**  
**8 00 pm**

Amber Hine, who trained at Capel Manor College and now runs Hine Garden Design, returns with a talk that covers some garden design history/context, site analysis, garden styles, design approaches, a look at good and not so good design experiences and a walk through a couple of projects.

### July



**Members Garden Visit**  
**Tuesday 7th:**  
**6 00 – 7 30 pm**

The Old Rectory near Thame has 5 acres of extensive herbaceous borders, a rose avenue, woodland and lake walks and kitchen and cutting gardens. It is surrounded by orchards and old glebe land with many mature trees. The visit includes home-made cakes and tea.

### August



**Members Garden Visit**  
**Tuesday 11th:**  
**6 00 – 7 30 pm**

This member's garden near Terrick has a charming old cottage, beautiful borders and lovely views.

Wine and nibbles will be provided.

### September



**Dahlias**  
**Tuesday 7th:**  
**6 00 – 7 30 pm**

Carolyn Ormesher, the founder of Missenden Seeds, grows all her own seeds and tubers and is passionate about flowers which are good for cutting and pollinators, including dahlias. She will talk about the history of dahlias, why you should grow them, different types, how to grow and propagate, dahlia breeding and top tips for beautiful dahlias. She will also bring some of her seeds to sell.

**Meetings are held at 8.00 pm every 1st Tuesday of the month (except January and August) at Stewart Hall, Little Kimble. Although we pride ourselves on our expert speakers, all talks are very informal and are followed by refreshments and a raffle.**

Visitors are always welcome. If you decide you would like to join please make yourself known to any Committee member or contact Liz O'Donnell, Membership Secretary, at [kehs.bucks@outlook.com](mailto:kehs.bucks@outlook.com).

Please see our website for more information about our events and membership.  
**[www.kehs.uk](http://www.kehs.uk)**

**AUTUMN SHOW –**  
**Stewart Hall**  
**Sunday 6th:**  
**2 00 – 4 30 pm**

Come and see some beautiful displays including chrysanthemums, dahlias and vegetables and enjoy delicious home-made cakes. If you are not a member and are interested in exhibiting please see the Autumn Show Information on our website.

# PYO AT LOCAL FLOWER FARM – HOWE FARM FLOWERS

Howe Farm Flowers is in the pretty village of Dorton, only a half hour's drive, growing the most beautiful, seasonal cut flowers with a proclivity for scent and sustainability.



*Armed with your secateurs, you can book a PYO flower session and fill a DIY bucket for £30 (approx)*

**What makes it special - is that you can visit for a PYO Flower session, join a flower arranging workshop, book Flowers & Tea or order bespoke bouquets.**

The Flower season starts with Mother's Day and continues right up to the first frosts. Offering seasonal bouquets from March, which can be delivered locally or collected from the farm - through to PYO Flower sessions, beginning in June and running weekly during the summer months - whilst workshops run all year round.

They also specialise in wedding floristry inspired by nature and offer bouquets, subscription flowers and DIY flower buckets.

There is an online shop, opening to visit in the summer months every Thursday, Friday and Saturday, 9am to 1pm, Selling flowers, pottery, gifts, teas & cakes.

Howe Farm's goals are to grow beautiful flowers that everyone can enjoy - and to create simple, natural arrangements that showcase the very best of what is in bloom.

Every stem you take home from Howe Farm has been hand-sown and carefully nurtured. Unless you're armed with a pair of secateurs and filling a pick-your-own bucket, everything is cut-to-order by the owner, herself.

They are keen to operate as sustainably as possible, using municipal compost from garden waste collected in Buckinghamshire. The farm is a chemical- and pesticide-free zone, and all produce packaging is kept to the bare minimum. A "no dig" technique is used with the flowerbeds, using recycled cardboard to help enrich the earth's ecosystem. Their flowers are grown in line with the seasons from March to October, so customers can rely on the very best blooms that Britain has to offer, month in and month out.



Howe Farm Flowers have been featured in numerous publications including *Gardeners World*, *Weddings and Honeymoons*, *Wildflower* and *Countryside* magazines.

Get in touch to learn more!  
<https://www.howefarmflowers.com>



## The nearby, Ryman's Flower Shed, is also worth a visit

This flower shed can be found at the end of Ryman's farm lane, on Thame Road, on the hill up to Brill. During March to early October (Thursdays to Sundays 10-6) it is stocked full of lovely home-grown farm flowers. The shed is self-service so you will find instructions on how to pay by card or phone in three easy steps. If you prefer to pay by cash, pop it into their cast iron letter box in the brick pillar on driveway.

# CHILTERN BREWERY

## BEER, HISTORY AND A PROPER PUB STORY

There is something particularly satisfying when local beer and local history come together — and this spring, we are fortunate to have three pieces of good news to share.

### The King's Head, Aylesbury



The King's Head is one of only a few remaining genuine coaching inns. Credit: Paul Grover

[The King's Head](#) – in direct contradiction of the Royal Standard of England – declares itself the oldest pub in Buckinghamshire. Controversial stuff. It's on pretty firm ground, though: this is one of a handful of remaining coaching inns, a precursor to what we call the pub. First mentioned in print in 1455, it may even be a little older. If you're in the market for an olde Aylesbury pub, you could do a lot worse.

**Ye Olde Rating: 9/10**

Genuinely historic.



First, from The Chiltern Brewery, our latest Small Batch Brew Here Comes The Sun, is now available. This bright Extra Pale Ale (4.5%) arrives just as the days begin to lengthen, and is very much in step with the season. Brewed in 440ml cans and released in limited quantities, it follows in the footsteps of last year's much-loved Long Summer Days. Bright, refreshing and easy-drinking, it has vibrant hop character and a clean finish — the sort of beer that is brewed for a sunny afternoon, a garden chair, or the first barbecue of the year.

**But this beer is only part of the story.**

Just down the road in Aylesbury, our pub The King's Head has been in the news for grand reasons: its extraordinary age! Recently highlighted by Will Hawkes in The Telegraph, as one of England's oldest and most historic inns, The King's Head is first mentioned in print in 1455 and may be even older still. That means generation upon generation has passed through its gates — travellers, townsfolk, merchants, workers, drinkers, diners and friends. In an age when so much changes so quickly, there is something pleasingly reassuring about a place that has offered hospitality for well over five centuries.

For lovers of pubs, that matters. A genuinely historic inn is not simply an old building with beams and fireplaces. It is living, shaped by people, trade, local life and the simple pleasures of conversation over a pint. The King's Head remains exactly that: a proper pub, deeply rooted in Aylesbury's and England's story, and still serving that same understated purpose today.

**A genuinely historic inn is not simply an old building with beams and fireplaces. It is living, shaped by people, trade, local life and the simple pleasures of conversation over a pint.**

The third piece of news follows naturally - for the first time, The King's Head has begun offering behind-the-scenes tours. These are not formal lectures or museum-style guided walks, but relaxed, story-led visits designed to reveal more of what makes the pub so special. Guests hear from George Jenkinson, the landlord of 20+ years, about the pub's history, see areas not usually open to visitors, and gain an insight into how a historic coaching inn works in the present day. The emphasis is on warmth, conversation and authenticity — very much in keeping with the spirit of the place.

Together, these three developments feel like a good reminder of what Buckinghamshire does so well. The local brewery producing characterful beer in small batches and its historic pub that is so much more than just a business — these are part of the fabric of the Wendover and the wider area. And we still have people who care enough to keep those traditions alive, while finding new ways to share them.

So whether you are tempted by a can of Here Comes The Sun, curious to visit one of the country's oldest inns, or simply fancy hearing a few good stories followed by a proper pint, there is plenty to enjoy this spring.

**And that, surely, is news worth raising a glass to!**

# LLEWELLYN KINCH ENERGY



## Energy Bills Are Going Up Again. Here's Why.

**This month I'm doing something a bit different. Normally this column covers the practical side of green energy. How solar works, whether a battery makes sense, that kind of thing. But right now there's something bigger going on, and it would feel odd to ignore it.**

Since early March, the Strait of Hormuz has been effectively closed. If the name doesn't ring a bell, it's a narrow stretch of water between Iran and Oman. About a fifth of the world's oil and gas normally passes through it. With shipping at a standstill, global energy prices have surged. UK wholesale gas prices have roughly doubled in a month.

Your April and May bills should actually be a little lower. The price cap dropped to £1,641, but that was set before the crisis hit. The July cap is expected to jump by around £300, potentially close to £1,970. If the situation drags on, some forecasters warn we could be back above £2,000. We saw something

very similar after Russia invaded Ukraine in 2022. Bills went up fast and took a long time to come back down.

Here's the honest bit. There isn't much any of us can do about global oil prices. If you heat your home with gas, which most of us do, this hits you directly. Solar panels won't change that. They won't help at the petrol pump either. And even if you already have solar, you're not immune to the wider rises.

What solar can do is reduce how much electricity you buy from the grid. That matters because UK electricity prices are tied to gas prices, even when the actual power comes from wind or solar farms. The less you rely on the grid, the less exposed you are when prices spike. But let's be clear: that's a long-term benefit.

If rising costs are worrying you now, the most practical steps are simple ones. Check you're on the best tariff and be careful with energy use. For a cost-effective solution, think about

insulation. Whether you're in a period cottage in Ellesborough or a larger home tucked into the Chiltern hillside, draught-proofing and loft insulation are probably the single best things you can do to cut costs, regardless of what's happening in the Middle East. So if this does continue, you're protected next winter when the heating comes back on full gas.

In short, solar and storage can help make you more energy independent. They're not a silver bullet though and there is more you can do too.

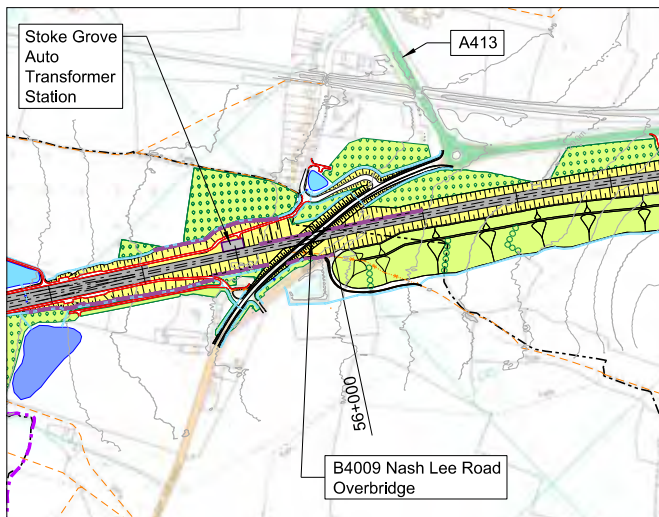
**Llewellyn Kinch**  
Director

[MakeMyHouseGreen.com](https://www.makemyhousegreen.com)

# HS2

## Nash Lee Road Overbridge

Traffic between Terrick and the A413 Wendover bypass will cross the HS2 railway line on an "Overbridge" that is currently under construction.



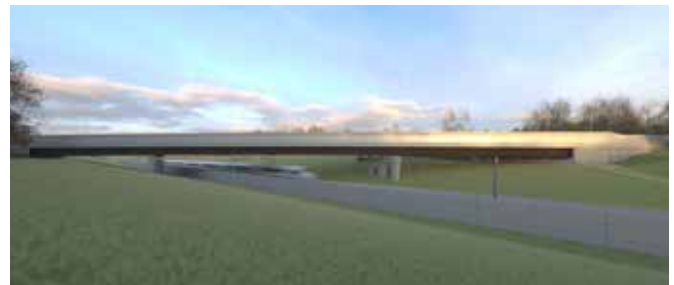
Location Plan<sup>1</sup>

Work started in 2023 with detailed ground investigation and piling of the foundations for the two concrete abutments and two piers. This took longer than expected due to adverse ground conditions, and was eventually completed in 2024. Sections of the four main girders were delivered by road at night as abnormal loads, and welded together to form the massive 140 metre long steel beams which have now been placed into position. This summer the concrete deck will be poured and parapet walls added. Underneath the beams, the "Wendover North Cutting" will be excavated down to about 8 metres below the ground level.

The finished bridge will have a 6 metre wide carriageway, a 2m wide footpath for the ELL/25 right of way, and grass verges on each side of the road.

To make space for the bridge worksite, the B4009 was diverted on the temporary road and bailey bridge over the path of the HS2 line, and temporary access provided to Nash Lee Lane. Nash Lee Road will be realigned close to the original route, with that work starting next year. Once the bridge is opened, the two temporary roads will be removed with the land being returned to agriculture.

If you need further details of the HS2 impact in the local area you can contact the Wendover HS2 Mitigation Action Group by emailing [enquiries@WHS2.org](mailto:enquiries@WHS2.org).



Visualisation<sup>2</sup>



Aerial views<sup>3</sup>



Nash Lee Road Overbridge girders, November 2025<sup>4</sup>

1. Extracted from the 2016 HS2 Final design drawing 161200 Wendover C222-ATK-CV-DPP-020-000005-FPD

2. Extracted from the 2022 EKFB Planning submission drawing NASH\_LEE\_-\_PERSPECTIVE\_VIEWS\_-\_SHEET\_2-2419816.pdf

3. Courtesy of Steve Walker

4. Courtesy of HS2

# FLORENCE NIGHTINGALE



Come together this summer to support local hospice care



**The much-loved Midnight Walk returns on Saturday 20th June at Roman Park, Aylesbury. Organised by Florence Nightingale Hospice Charity, this special event brings the community together for an evening of remembrance, celebration, and connection, all while supporting vital hospice care. Solstice Unwind is a new feature and takes place before the Midnight Walk at Roman Park.**

The Midnight Walk promises to be a magical night, as walkers gather on the summer solstice. Friends, families, and supporters will take to the streets of Aylesbury to honour loved ones and celebrate life, united under the solstice sky.

Participants will once again light up the night in colourful and creative style, with glow sticks, fairy lights, and face painting. Every walker receives a free commemorative t-shirt, and, new for 2026, light-up solstice headpieces and luminous flower crowns will be available to purchase, helping to create a vibrant and uplifting atmosphere across the town.

**"Midnight Walk is always such a special event for our community, bringing people together to remember loved ones while celebrating and supporting our Hospices," said Lyn Denham, Community & Events Fundraising Manager at Florence Nightingale Hospice Charity. "This year, with the addition of our solstice theme and Solstice Unwind, we're creating even more opportunities for reflection and connection. It's set to be a truly memorable evening for everyone involved."**

Solstice Unwind is a calming and restorative pre-walk wellness experience, included in the entry fee for all registered Midnight Walk participants. Taking place from 7:00pm at Roman Park Hall, this special addition will feature professionally-led yoga, soothing sound baths, pilates and other wellness sessions plus wellbeing stalls to explore. It will offer walkers time to relax, reflect, and connect ahead of the main event. This is a connected but separately ticketed event to Midnight Walk. Solstice Unwind is free to attend (with a pre-booked Midnight Walk ticket) and the wellbeing sessions are £10 per person, however, Midnight Walk participants can book onto these expert-led sessions for £5.

The Midnight Walk remains one of the Charity's flagship fundraising events, helping to raise essential funds to support patients and families across Buckinghamshire and its borders who rely on hospice care.

For more information and to sign up, please visit [www.fnhospice.org.uk/mnw26](http://www.fnhospice.org.uk/mnw26)

Florence Nightingale Hospice Charity would like to extend a special thank you to this year's Midnight Walk sponsors: ASM, Aston Commercial Cleaners and Xpress Labels, as well as our media partner Bucks Radio.

# PHOTO COMPETITION

## OUR 'COUNTRYFILE' STYLE PHOTO COMPETITION FOR CHILDREN & ADULTS



- It is time to get your cameras or mobile phones out!
- Photograph what you love about our local area.
- You may be inspired by photos in the Countryfile calendars.
- Is there a special spot in your garden where you like to sit, relax and look at the flowers or watch wildlife?
- Do you have a particular place you like to visit and feel in tune with nature?
- On your favourite walk what makes it memorable? Is it the view?
- Photograph the animals, flowers and scenery so they can be shared and enjoyed by others at our Summer Village Party.
- Bring your photographs along on Saturday 20<sup>th</sup> June to Ellesborough Village Hall at 12.30 for judging. Print out your entries on to paper and make sure your name and age (if under 18 years old) are written on them, together with the date and location photo taken.
- Winning entries will receive cash prizes and appear in our village magazine.



If you can't attend on the day please contact Helen Holman [helenholman@ellesborough-pc.gov.uk](mailto:helenholman@ellesborough-pc.gov.uk) so she can collect entries before the day. Ellesborough Parish Council are committed to conserving and enhancing biodiversity.

# Ellesborough Parish Council

## CHAIRMAN'S ANNUAL REPORT

### Year ending 31 March 2026

**As we commence a new year in Ellesborough Parish, I am pleased to summarise the past 12 months key achievements and set out the expectations for 26/27.**

Firstly, we can confirm at the AGM no new candidates came forward to volunteer for a role at the Council and so the EPC remains unchanged and the roles for each Councillor also remain unchanged. These are set out on the EPC website page with the contact details for each Councillor and The Clerk. [www.ellesborough-pc.gov.uk](http://www.ellesborough-pc.gov.uk)

Headline activities for 2025/26 and going forward to 2027 includes the following:

#### Outdoor Spaces

- The childrens playground needed further investment for wear and tear, Cymbaline Lodge Freemasons are thanked for providing a new picnic bench and in conjunction with Risborough Rangers further investment took place at the playing field to create 25 off road spaces with reinforced green matting. We are fortunate to have these places within our Parish and it remains a priority to keep these facilities in good order.

#### Rural Affordable Housing

- On Chalkshire Road, the Rural Affordable Housing has now started construction, this is a 7 year journey from an original survey showing demonstrable demand for a small amount of affordable housing within the Parish. We expect these 6 x houses to be completed in early 2027.

#### Planning

- Generally, there has been very little new development or construction activity in the Parish, during the past 12 months, other than small domestic home improvements. All planning applications are initially reviewed by Cllr McGrail and we ask that all comments submitted to Bucks, regarding live applications copy in both the Clerk, as EPC no longer have access to any comments made directly to Bucks Planning Authority.

#### Dunsmore

- This year we will be looking at how the Village Pond can be rejuvenated as part of our Bio-Diversity Gain policy.

#### Coombe Hill

- Coombe Hill car park still causes issues with inconsiderate parking along the surrounding verges and EPC have repeatedly challenged The National Trust about increasing the size of the car park, they do not see it as a priority but our view is that as Bucks intends providing 5000 new homes per year for the next 20 years this is only going to get worse and will need addressing soon. In the next 12 months Cllr Hares will be pushing this forward.

#### Footpaths

- EPC are in discussions with Bucks Rural team to improve the footpath through the Church graveyard and Cllr Panikkar will be taking this forward. In addition, working with residents, EPC have recently commissioned a technical survey to review the viability of building a new footpath from Ellesborough Golf Course along Wendover Road and down into the Butlers Cross main junction. This will require numerous stakeholders cooperation and grant applications, but we are going to see if we can find a new solution to this old problem.

#### HS2

- Recently we have had several reports of HS2 vehicles using Chalkshire Road. This is a prohibited route for HS2. To assist us in enforcing this, we would like to ask people to take pictures of any possible HS2 HGV's travelling along Chalkshire Road and send them to the Clerk please.

#### Parish Hall

- The Parish Hall Committee are doing a fantastic job of running this key amenity, EPC will endeavour to assist them where we can and in particular trying to secure grants for further building improvements.

#### Community Events

- EPC holds several community events each year, including a Village Summer Party, Remembrance Service and a Christmas Carol Concert. All these events will be happening again this year and the Summer Party is on the 20th June. All are welcome, food and drinks produced in the Parish will be available, as well performances from the Ellesborough Silver Band plus Photo and Doggy competitions!

#### Communications

- Cllr Keeble is our communications lead and works hard to keep the whole Parish informed, the EPC website continues to evolve in quality and content, the Parish Clerk email newsletter advises on road closures etc and we will continue to financially support the exceptional Ellesborough Magazine.

#### Speeding and Potholes

- There is not a month goes by when EPC to do not get asked what we are doing to repair potholes and reduce speeding and why it is only getting worse. Cllrs Withey and Panikkar are constantly in contact with Bucks Highways and Thames Valley Police and bluntly it is almost a thankless task, over which EPC has little powers of influence. The potholes are a function of Bucks Council being under resourced, EPC have no powers or budget to deal with potholes and all we can do is report them in the same way any member of the public can. Speeding, however we do have an ability to introduce our own initiatives to complement TVP's efforts. We urgently need more volunteers to help the Speedwatch team and during 2026 we will be engaging with the Parish, TVP and Bucks to review if new physical traffic calming measures can be installed.

#### Finance

- EPC remains financially robust, which has enabled a zero increase in Parish Council tax for 2026/27. In addition, approximately 18 months running costs are currently held in reserve. This reserve is in keeping with previous years and will provide resilience against any sudden dramatic Parish Council tax increases going forward.

Finally, I would like to thank all the Parishioners and Organisations who keep our small rural parish functioning. Including the Parish Hall Committee, the Village Litter Pickers, the Speedwatch team, Ellesborough Trust Committee, TVP Neighbourhood Team and the Ellesborough Parish Magazine Editors. As well as, all the Parish Councillors and The Clerk.

Hopefully you can now understand a little bit more about how, the volunteers of this Parish have all tried to make our rural environment a better place to live and some of the tasks ahead.

Thank you

**Chairman McGrail**

Ellesborough Parish Council

# PLANNING APPLICATIONS

Jan 2026 – 12 May 2026

PL/26/02969/FA

**Application Validated** Mon 27 Apr 2026  
**Address** Old Orchard Nash Lee Road Terrick  
Buckinghamshire HP17 0TQ  
**Proposal** Proposed new vehicular access,  
construction of new boundary walls/  
fences around Old Orchard  
**Status** Registered  
**Appeal Status** Unknown  
**Appeal Decision** Not Available

**Crown reduction in height to 30m above ground to 27 beech trees (G1) to maintain and balance crown without over reducing the canopy while alleviating shading and weight on the main stems and to prevent future risk to the traffic on Wendover road and fell 1 x Beech tree (no 27) as diseased and to prevent further decline and spread to further trees and the removal of the stem of Tree No 5 oversailing the Wendover Road**

Tallboys Wendover Road Butlers Cross Buckinghamshire  
HP17 0TU

Ref. No: PL/25/5740/TP | Validated: Mon 26 Jan 2026 | Status: Decided

**Demolition of existing conservatory and construction of single storey side extension, part single part two storey rear extension, two storey front porch and loft conversion with two front dormers and seven rooflights**

White Gates Risborough Road Terrick Buckinghamshire  
HP17 0UB

Ref. No: PL/26/00338/FA | Validated: Fri 16 Jan 2026 | Status: Registered

**Notification under Class R of the Town and Country Planning (General Permitted Development) (England) (Order) 2015 - Change of use from agricultural building (less than 150sqm) to flexible commercial use falling within use class E**

Perrins Barn Marsh Lane Bishopstone Buckinghamshire

Ref. No: PL/26/02540/PNC | Validated: Fri 20 Mar 2026 | Status: Decided

**Certificate of lawfulness for the proposed replacement of a failing pair of wooden slatted swan neck gates with a more reliable single slatted composite board/steel frame sliding gate Pillar-to-pillar, the gateway is approx. 3.75m wide. The existing brick pillars and adjoining wall are to be retained The height of the proposed gates would not exceed the height of the adjoining brick wall When retracted, the new gate and mechanisms would sit behind the existing boundary wall/pillars and therefore not be observable from the road/footpath From the roadside the gate is situated down a short incline, so would appear lower to passers by**

Honeywood Risborough Road Terrick Buckinghamshire  
HP17 0UB

Ref. No: PL/26/00360/SA | Validated: Fri 16 Jan 2026 | Status: Decided

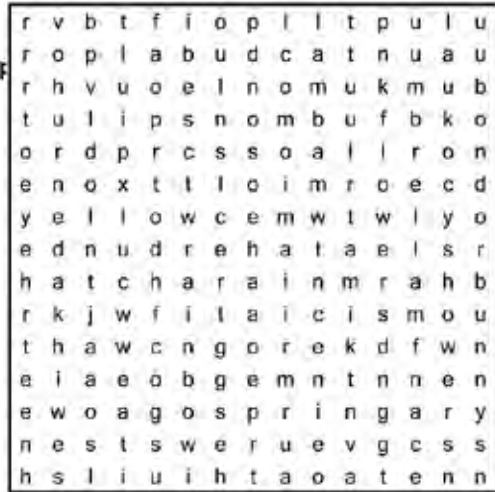
**Part single storey front and two storey side extensions**

9 Royal Mead Butlers Cross Buckinghamshire HP17 0TL

Ref. No: PL/26/01756/FA | Validated: Thu 26 Mar 2026 | Status: Registered

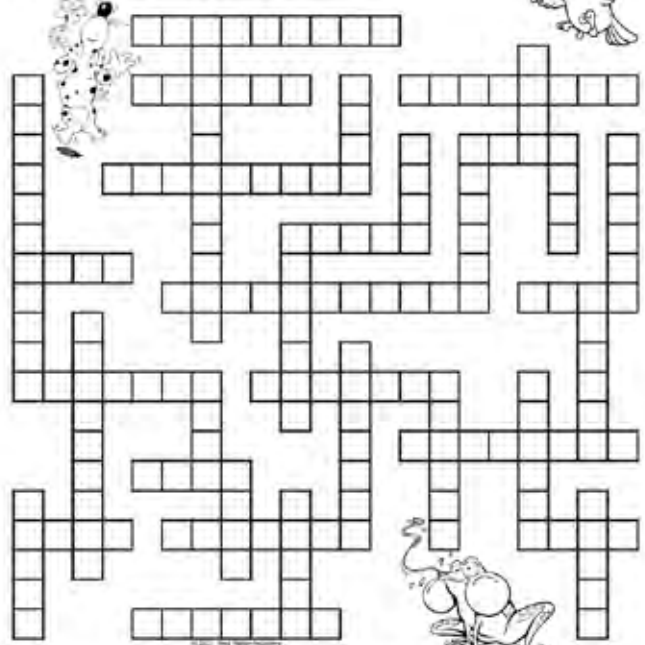
# SPRING PUZZLE

## Spring Word Search



- |         |          |
|---------|----------|
| Spring  | Clean    |
| Showers | Flowers  |
| Tulips  | Thaw     |
| Hatch   | Chick    |
| Lamb    | Bunny    |
| Blossom | Nests    |
| Yellow  | Warm     |
| Bud     | Umbrella |
| Rainbow | Bloom    |

## SPRING ANIMALS



- |                       |                       |                       |                       |                       |                        |
|-----------------------|-----------------------|-----------------------|-----------------------|-----------------------|------------------------|
| <b>4 letter words</b> | <b>2 letter words</b> | <b>3 letter words</b> | <b>7 letter words</b> | <b>4 letter words</b> | <b>11 letter words</b> |
| bees                  | frog                  | birds                 | chicks                | bear cub              | ladybirds              |
| lamb                  | bunny                 | chick                 | chicks                | lamb                  | ladybirds              |
| egg                   | nest                  | grass                 | chicks                | lamb                  | ladybirds              |
| egg                   | own                   | hatch                 | chicks                | lamb                  | ladybirds              |
| lamb                  | warm                  | chick                 | chicks                | lamb                  | ladybirds              |
| egg                   | own                   | hatch                 | chicks                | lamb                  | ladybirds              |

## I SPY SPRING

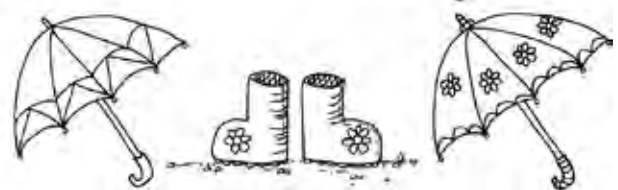
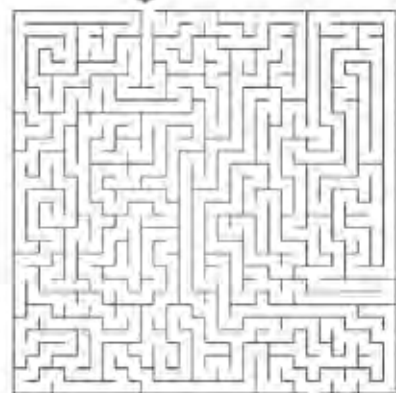


- |    |    |    |    |    |    |
|----|----|----|----|----|----|
| 11 | 11 | 12 | 16 | 11 | 15 |
| 14 | 13 | 15 | 12 | 11 | 10 |

## Springtime Maze



It's just started raining. Can you guide the girl through the maze to the umbrella shop and colour in your favourite umbrella!



# SWEENEY'S

## WENDOVER

# For All Your Favourite Local & Artisan Brands.



Great Food At Everyday Prices.



CULTURE  
BAKERY



THE  
CHILTERN  
BREWERY

EST 1980



RG SEAFOOD



Local radio for Ellesborough,  
Butlers Cross, Terrick  
and the Kimbles

**Monday to Friday**

- 7.00 am Red Kite Breakfast Sparkling music to kick-start your day, with Chris Townsend
- 10.00 The Mid-Morning Show Classic hits, recent releases and local information with Howard Bond
- 1.00 The Afternoon Show Music from across the decades including afternoon tea at 3
- 4.00 Red Kite Radio Drivetime with Paul Higgs
- 6.00 The Gold Kite '60s,' 70s,' 80s and '90s hits
- 7.00 Monday The Seventies Rewind  
1970s hits with Donald McFarlane
- Tuesday The Nineties Rewind  
1990s hits with Daniel Ashman
- Wednesday The Eighties Rewind  
1980s hits with Simon Jobling
- Thursday The Sixties Rewind  
1960s hits with Donald McFarlane
- Friday The Weekend Warm-Up '90s and '00s  
dance tracks with Daniel Ashman
- 9.00 Monday Musicals Hour Louise Goodridge
- Tuesday Motown Magic Annette Luck
- Wednesday Red Kite Country Country hits
- Thursday The Gold Kite: Golden Years  
Hits from one year in history
- 10.00 Weekday Wind-Down with Donald McFarlane
- 11.00 Through the Night Non-stop classic hits

**Saturday**

- 7.00 am Saturday Breakfast with Annette Luck
- 10.00 The Mid-Morning Show with Peter Dawes
- 12.00 pm Saturday Lunchbox Music from across the generations with Heather Jan Brunt
- 1.00 The Gold Kite '60s,' 70s,' 80s and '90s hits
- 2.00 The Noughties 'Til Now Show Hits from the noughties, tens and today with Hannah Austin
- 5.00 The Funk, Soul & Dance Show Soulful sounds
- 7.00 Red Kite Party Night Classic party hits
- 11.00 Through the Night Non-stop classic hits

**Sunday**

- 7.00 am Sunday Breakfast with Annette Luck
- 10.00 Sunday Brunch with Juanita Hughes, including Thought for the Week at 12.10
- 1.00 pm The Sunday Afternoon Session with Paul Nicholas, including the Acoustic Hour at 3.00
- 4.00 Music and Memories with Gary Goodridge
- 6.00 The Gold Kite '60s,' 70s,' 80s and '90s hits
- 7.00 Sunday Rocks! Classic rock with Clive Wagerfield
- 10.00 Breakaway Blues Show with Graham Andrews
- 11.00 Through the Night Non-stop classic hits

107.2 FM + Smart speaker + Online at [redkiteradio.com](http://redkiteradio.com)

# Your local bus service

New bus, new routes



**Catch your local bus to get out and about**

New timetabled routes into Princes Risborough are launching 7 May 2024. Including journeys to and from Chinnor and World's End. Tickets are £2 or £2.50, free for under 16s and bus pass holders. Please pay by cash.

Brought to you by:

**Risborough Area Community Bus**

Supported by:



For more information visit [racb.co.uk](http://racb.co.uk) or scan the QR code



<i>Ellesborough / Terrick / Kimble Bus Services</i>	<b>REDLINE BUS</b> Route 130 Mon - Fri Only Bus Stops	<b>RISBOROUGH COMMUNITY BUS</b> Route 6 Mon / Thu / Sat Hail & Ride
---	--	--

<b>Princes Risborough</b>				08:45	11:40	14:50
<b>Aylesbury Bus Station</b>	09:55	11:55	13:55			
Stoke Mandeville Hosp	10:03	12:10	14:03			
Royal Mead	10:10	12:11	14:10	09:03	11:58	15:08
Chalkshire Cottages	10:11	12:12	14:11	09:03	11:58	15:08
The Russell Arms PH	10:12	12:12	14:12	09:04	11:59	15:09
Ellesb' Beacon View	10:12	12:12	14:12	09:04	11:59	15:09
Ellesborough Church	10:13	12:13	14:13	09:05	12:00	15:10
The Retreat	10:14	12:14	14:14	09:06	12:01	15:11
<b>Princes Risborough</b>	10:19	12:19	14:19	09:39	12:34	15:44
<b>High Wyc' Bus Station</b>	10:41	12:41	14:41			

<b>High Wyc' Bus Station</b>	08:55	11:17	13:17
Princes Risborough	09:13	11:41	13:41
The Retreat	09:24	11:47	13:46
Ellesborough Church	09:25	11:48	13:47
Ellesb' Beacon View	09:26	11:48	13:48
The Russel Arms PH	09:26	11:48	13:48
Chalkshire Cottages	09:27	11:49	13:49
Royal Mead	09:28	11:50	13:50
Stoke Mandeville Hosp	09:37	11:59	13:59
<b>Aylesbury Bus Station</b>	09:47	12:07	14:07



# GKL

01296  
613722

LOCAL SALES - SERVICING - LEASE/RENTAL



Why should you buy GKL Vehicle?



Vehicle Servicing in Princes Risborough

[bookings@gkluk.com](mailto:bookings@gkluk.com) - 01844 852110 - Cars, Vans, PHEV & EV's



# BARTON PETROLEUM

Supplying *Heating Oil* to  
Ellesborough and the  
surrounding villages for  
over 50 years

Mayur, Depot Manager

01923 233171



Supplying turf & fencing to the trade and public.  
All types of fencing, gates, decking, sleepers & more.

Lewis Developments (Ilmer) Ltd The Brown Barn, Thame Road  
Longwick, Buckinghamshire HP27 9QU  
[lewisfencingsales@gmail.com](mailto:lewisfencingsales@gmail.com) > 01844 344435



# Pilates in Butlers Cross



## Pilates in Butler's Cross

I am very pleased to share that my classes in the village are growing each term, I am now offering classes for beginners, improvers and at intermediate level.

## Why try Pilates?

We focus on good fluid movement of the body, making corrections along the way to avoid injury. Pilates helps achieve good posture, keeping your

joints healthy and aligned, increases flexibility, coordination and balance, it lengthens your spine along with toning and strengthening your body.

Pilates is suited to all and will continue to challenge you no matter what your experience and fitness level.

Classes are at different times on Monday and Thursday mornings, held in Ellesborough Village Hall,

Butler's Cross. I provide mats and all equipment.

For further information please do contact me.

**Anna Taylor**  
07901 916264



# Looking to visit Canada...

TOP 8 UK CANADA AGENT AS RECOGNISED BY DESTINATION CANADA

For help with creating the best itinerary for you please call or email us

Canada specialist since 2001 • Extensive experience to arrange every detail

Friendly, honest advice from an independent travel agency

Specialists in tailor-making holidays to destinations worldwide

Using fully bonded tour operators • No booking fees



Travel Impressions

A World of Experience

01442 890265

enquiries@travelimpressions.co.uk  
www.travelimpressions.co.uk

Suite 4, George House, 64 High Street, Tring, Herts. HP23 4AF

# VILLAGE ENVIRONMENTAL SERVICES DOMESTIC DRAIN SERVICES

Proprietor: Dennis Cook  
Est. 1979

**24/7  
CALLOUT  
SERVICE**

# BLOCKED DRAINS?

# CALL US DAY OR NIGHT

**FAMILY RUN BUSINESS SINCE 1979**

**BLOCKED DRAINS CLEARED • REASONABLE RATES**

**NO EXTRA CHARGE FOR EVENING, WEEKEND  
OR BANK HOLIDAY CALLOUTS**

**CCTV DRAIN SURVEYS**

**FULL PUBLIC LIABILITY INSURANCE**



**07850 635 844**  
**01296 624 221 (MESSAGES)**



*Anthony's Servicing*



## **GAS-OIL-LPG**

Service and maintenance of boilers, fires and AGA/Rayburns  
Landlords Safety Inspections

Local family run business with over 30 years' experience  
Service Plans now available with additional benefits

Office 01296658419 Mobile 07973911674

Website [www.anthonyservice.co.uk](http://www.anthonyservice.co.uk)

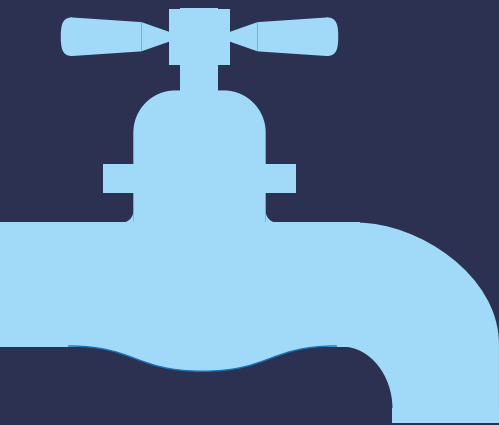
Email [anthonys.service@gmail.com](mailto:anthonys.service@gmail.com)

Facebook <https://www.facebook.com/anthonyservicing>



**Checkatrade.com**  
Where reputation matters

Over 400 5 star  
reviews on  
**feefo**



# YOUR LOCAL, RELIABLE PLUMBING, HEATING AND BATHROOM EXPERTS

## BOILERS

Servicing, repairs and installations

## CENTRAL HEATING

Fault finding, installation and upgrades

## BATHROOMS

Design and installation specialists

## PLUMBING

From dripping taps to full installations

Established for  
over 25 years

Free no obligation  
quotations



Reg No. 141994  
GAS/LPG



Reg No. 763  
OIL



01844 274 604 info@surab.co.uk www.surab.co.uk



Dedicated to delivering a service to suit your needs

Whatever your accountancy needs as an individual or a business, small or large, we are here to help. At Numbers we pride ourselves on our cost effective and friendly solutions. We'll work with you and take the time to understand your business or personal tax circumstances to offer you a tailored package to best suit you.

*"I am so pleased with the support we get from Numbers, and you and your staff do an amazing job"*



Do pop in to our office in Wendover or contact us today for a no obligation chat - we look forward to hearing from you.

T: 01296 620220  
E: [info@numbers-ltd.co.uk](mailto:info@numbers-ltd.co.uk)  
W: <https://www.numbers-ltd.co.uk>

**extremeclean.co.uk**

**Superior Cleaning and Application of Protectors**

**Carpet, Upholstery, Leather  
Modern & Oriental Rugs  
Curtains  
Tile & Grout/Stone Flooring  
Anti-Allergen Treatment  
Specialist Stain Removal  
Wood Floor Refinishing**

**Paul Brooker**

35 Place Farm Way, Monks Risborough  
Bucks HP27 9JJ

**T: 01844 346379 / 344735**

**M: 07866 376934 E: [JIJp@uwclub.net](mailto:JIJp@uwclub.net)**

**[www.extremeclean.co.uk](http://www.extremeclean.co.uk)**

**HOME REARED MEATS,  
LOCAL PRODUCE  
& HOME COOKED FOOD**

**BESPOKE GIFT HAMPERS**








**ONSITE BUTCHERY**

Chequers Estate | HP17 0UT  
FARM SHOP & KITCHEN  
Tuesday – Sunday 10am – 4 pm  
[www.buckmoorendfarm.co.uk](http://www.buckmoorendfarm.co.uk)

**Christopher  
THE LOCKSMITH**

**ARE YOUR LOCKS BEHAVING BADLY?**

We Value Old Fashioned Customer Service  
A Local Trusted Family Business Since 1989

-  Specialist in UPVC & Wooden Doors
-  No Call Out Charge
-  No Fix No Fee
-  All Work Fully Guaranteed
-  10% Senior Citizen Discount



For More Advice & Help Call Christopher:

**07772 111 222**

# Memory Café

Supporting those living with dementia

Hosted by Ashridge Home Care

At the Chilterns Neuro Centre,  
Oakwood Close, Wendover, Aylesbury  
HP22 5LX

*Parking on-site available*

On the **FIRST** Friday of every month  
10am-12noon

hello@ashridgehomecare.co.uk  
www.ashridgehomecare.co.uk  
01494 917344

Everyone is welcome!



# Qigong & Tai Chi

For health and wellbeing

Learning the art of Qigong through mindful breathing and gentle movement can provide benefits, from cognition to digestion...

- Greater mental clarity
- Improve sleep quality
- Relieve pain
- Reduce anxiety
- Increase energy
- Improve mobility and coordination
- ... and much more ...

Group classes in Butlers Cross and Wendover on Wednesdays  
Or via Zoom

For more information, please contact:

**Ruth Stephenson**

07354 686606 or  
qigong@resms.co.uk



# Bespoke Quality Care in Your Home with Right at Home Aylesbury Vale & Chiltern

- Companionship
- Personal Care
- Live-in Care
- Hospital-to-Home Care
- Specialist Dementia Care
- Respite and Holiday Care
- Social Activities and Hobbies



# 01296 798910

rightathome.co.uk/aylesbury  
aylesbury@rightathome.co.uk





# boden Furniture Ltd.

Bespoke joinery



Specialising in kitchens, wardrobes, staircases, alcove and TV units, bespoke windows, doors and all aspects of carpentry

info@bodenfurniture.com +44 (0) 7792 385224



Unit 4, Manor Farm, Buckingham Road, Whitchurch, HP22 4RB

## J Brown Funeral Services

Independent Family Funeral Director

[jbrownfuneralservices.co.uk](http://jbrownfuneralservices.co.uk)



Serving Ellesborough, Wendover, Aylesbury, Amersham, and all surrounding areas.



Funeral Director Jason Brown has over 30 years experience and is here to assist you with making funeral arrangements, be they traditional, green or totally bespoke.



Recommended by The Good Funeral Guide.



### Amersham

67 Woodside Road, HP6 6AA

**01494 727474**

### Wendover

23 High Street, HP22 6DU

**01296 312222**



*Concierge*

Concierge Property Maintenance delivers an unsurpassed level of commitment and service personalised to meet every individual property need. Our team of skilled craftsmen truly care about your home or work as if it was their own. If you are a Concierge Premier Member, we guarantee priority attention from our team of skilled craftsmen 24 hours a day, 365 days a year. We offer high quality workmanship and timely support in all aspects of maintenance including:



- Building works and extensions • Carpentry • Painting & Decorating
- Kitchen and bathrooms
- Plumbing • Electrical works • CCTV & Alarm services
- Handyman services • Plastering • Flooring • Golf Simulators and much more



## COVERING VARIOUS LOCATIONS WITHIN BUCKINGHAMSHIRE

Please contact the team today to see how we can help you.

☎ 01494 702099 | ✉ hello@conciergegrouppk

📍 Kings Head House, 15 London Road, Beaconsfield, Bucks HP9 2HN



# Your home. Your care. Our community.

Expertly managed live-in and visiting care tailored to you.

At Ashridge Home Care, we believe the home you love is the best place to stay. When the time comes for additional support, our team of qualified carers are here to support you, whether you need a couple of hours a week, or 24/7 live-in care. As a family-owned, fully regulated provider, we don't just "introduce" carers; we manage every detail to give you total peace of mind.

Contact our team to learn more on: **01494 917 344**  
email: [care@ashridgehomecare.co.uk](mailto:care@ashridgehomecare.co.uk)  
[ashridgehomecare.co.uk](http://ashridgehomecare.co.uk)

**Celebrating 10 years with a new look and the same award-winning care.**

 **Ashridge**  
HOME CARE



Rated  
**'Outstanding'**  
for caring by  
the CQC



**BRADLEY & JONES**

**FUNERAL DIRECTORS**

**Renfrew Cottage, Back Street Wendover HP22 6EB**

**[tim@bradleyandjones.co.uk](mailto:tim@bradleyandjones.co.uk) 07711750917**



**PURE**  
REFLEXOLOGY

Gift a *Reflexology* experience

We all have times when our wellbeing needs a boost. Are you or someone you care about in need of a treat?

Based in Wendover, *PURE Reflexology* provides one of the most popular complementary therapies in the world. By naturally stimulating the body's healing processes, Reflexology can address issues ranging from physical pain to stress and anxiety.

Unwind in an oasis of calm.

*Gift Vouchers available*

*"I found Sam to be incredibly warm and welcoming"*

*"I felt so relaxed and well afterwards"*

*"The best I have ever been to"*

For more information,  
visit [pure-reflexology.co.uk](http://pure-reflexology.co.uk)



# Graham Blake

soft furnishing

- Loose covers
- Curtains
- Re-Upholstery
- Tracks & Poles

TEN YEAR GUARANTEE

For personal, helpful service, please call

Tel: 01844 261769

Mob: 07801 182400

[gblakefurn@gmail.com](mailto:gblakefurn@gmail.com)

[www.grahamblake.com](http://www.grahamblake.com)

## BRENDAN MCFALL

### PAINTER & DECORATOR

#### INTERIOR & EXTERIOR

MOBILE	LANDLINE
07581 693653	01296 294175




[brendanmcfall511@btinternet.com](mailto:brendanmcfall511@btinternet.com)


# Clements

CARPENTRY & PROPERTY SERVICES  
[clements carpentry@hotmail.co.uk](mailto:clements carpentry@hotmail.co.uk)

- MAINTENANCE
- REFURBISHMENT
- MODERNISATION
- PROJECT MANAGEMENT

FULLY INSURED

 07584 201706

 01296 625863

# DIRECTORY OF ADVERTISERS.

## Appliance, repair, gardening, house & cleaning services



**Anthony's Servicing**  
Service & maintenance of boilers,  
fires, agas/rayburns

anthonys.service@gmail.com  
01296 658419 07973 911674  
www.anthonyservice.co.uk



**Barton Petroleum**  
Supplier of Heating Oil

Mayur - Depo Manager  
01923 233171



**Boden Furniture Ltd.**  
Bespoke joinery

info@bodenfurniture.com  
07792 385224

### BRENDAN MCFALL

**Brendan McFall**  
Painter & Decorator

brendanmcfall511@btinternet.com  
07581 693653 | 01296 294175



**Christopher the Locksmith**  
Locksmith

07772 111 222



**Clements Carpentry**  
Carpentry & Property Services

clementscarpentry@hotmail.co.uk  
01296 625863 | 07584 201706



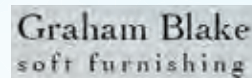
**Concierge Property Maintenance**  
Building Work, Carpentry and  
other Property Services

01494 702099  
conciergepropertymaintenance.co.uk



**Extreme Clean**  
Carpet, Flooring & Upholstery  
Cleaning & Treatments

jijp@uwclub.net  
01844 346379/344735 | 07866 376934  
www.extremeclean.co.uk



**Graham Blake**  
Soft Furnishings

gblakefurn@gmail.com  
01844 261769 07801 182400  
www.grahamblake.com



**Lewis Turf & Fencing**  
Supplier of turf and Fencing  
to trade and public

lewisfencingsales@gmail.com  
01844 344435  
www.lewisturfandfencing.co.uk



**M Simmonds**  
National Award Winning Decorators

michael@msimmonds.co.uk  
01296 655774 07850 499795  
www.msimmonds.co.uk



**Surab**  
Experts in Plumbing, New Boiler  
& Central Heating Systems

01844 274604  
www.surab.co.uk



**Village Environmental Services**  
Family run domestic drain services  
with 24/7 callout service

01296 624221 (messages) 07850 635844

## Food and drink



### Buckmoorend Farm Shop, Butchery & Kitchen

Farm Shop, Butchery & Kitchen selling home reared meats & other local produce as well as hot food & drink

info@buckmoorendfarm.co.uk  
01296 624425  
www.buckmoorendfarm.co.uk



### Chiltern Brewery

Brewery selling award winning ales & tastings

01296 613647  
www.chilternbrewery.co.uk



### Sweeneys

Award winning local supermarket

## Funeral Services

### BRADLEY & JONES

Bradley & Jones  
Funeral Directors

www.bradleyandjones.co.uk  
01296 622975

### J. Brown Funeral Services

J Brown Funeral Services  
Funeral Directors

www.jbrownfuneralservices.co.uk  
01494 727474 | 01296 312222

## Care and health services

### Anna Taylor Pilates

Anna Taylor Pilates

Beginners and Improvers Pilates classes

annataylorpilates@gmail.com  
07901916264



Ashridge Home Care

Award winning home care company providing hourly support or live-in care services so you can stay in your own home

info@ashridgehomecare.co.uk  
01494 917344  
www.ashridgehomecare.co.uk



Pure Reflexology

Reflexology therapies

samquilter.reflexology@gmail.com  
www.pure-reflexology  
07814 667680



Right at Home

In Home Care & Assistance

rightathome.co.uk/aylesbury  
aylesbury@rightathome.co.uk  
01296 798910

## Qigong & Tai Chi

Qigong

Tai Chi focused on health and wellbeing

qigong@resms.co.uk  
07354 686606

## Accountancy services



Numbers Limited

Accountancy, Tax and Bookkeeping Services

info@numbers-ltd.co.uk  
01296 620220  
www.numbers-ltd.co.uk

## Retail



### ANTIQUES AT .. WENDOVERY

Established 1987

01296 625335  
www.antiquesatwendovery.co.uk



GKL

Local sales, Servicing and lease/rental

bookings@gkluk.com  
01844 852110  
www.gkldirect.co.uk

## Computer and internet services



Wendovery Computers

Computer Equipment Supply, Repair and Upgrading

help@wendovery-computers.co.uk  
01296 200275  
www.wendovery-computers.co.uk

## Travel services



Risborough Area Community Bus

Bus service  
racb.co.uk



Travel Impressions

Independent Travel Agent

enquiries@travelimpressions.co.uk  
01442 890265  
www.travelimpressions.co.uk

# Directory of LOCAL ORGANISATIONS

## **Ellesborough Parish Council**

Chairman, Matt McGrail  
Parish Clerk, Mr John McKeown  
07880 732574

Windward, North Lee Lane,  
Terrick HP22 5YB

*Parish Council Update*  
[clerk@ellesborough-pc.gov.uk](mailto:clerk@ellesborough-pc.gov.uk)

## **Council**

Councillor Clive Harriss  
07768 876568

Ridgeway East Ward  
Councillor Steve Broadbent  
07471 144181

Councillor David Carroll  
*see website*

## **Member of Parliament**

Greg Smith MP  
0207 2194287  
[greg.smith.mp@parliament.uk](mailto:greg.smith.mp@parliament.uk)

## **Ellesborough Parish Hall**

Sally Withey  
07810878674  
[contact@ellesboroughparishhall.com](mailto:contact@ellesboroughparishhall.com)  
online enquiry form -  
[Ellesboroughparishhall.com](http://Ellesboroughparishhall.com)

## **Kimble Stewart Hall**

Bookings Secretary,  
Liz Collins 07527 595813 or  
[kimblestewarthall@gmail.com](mailto:kimblestewarthall@gmail.com)

## **Dunsmore Village Hall Association**

[dunsmorehallbookings@gmail.com](mailto:dunsmorehallbookings@gmail.com)

## **Dunsmore Village Hall website**

[www.dvha.co.uk](http://www.dvha.co.uk)

## **Ellesborough Silver Band**

[www.ellesboroughsilverband.co.uk](http://www.ellesboroughsilverband.co.uk)

## **Great Kimble Church of England First School**

Headteacher  
01844 346189

## **Kimble and Ellesborough Horticultural Society**

Membership Secretary, Liz O'Donnell  
[kehs.bucks@outlook.com](mailto:kehs.bucks@outlook.com)

## **The Chiltern Ladies**

President, Anne Adams  
[stannie@live.co.uk](mailto:stannie@live.co.uk)  
01296 612179

## **The Scout Association, Buckinghamshire**

Enquiries, County Office  
01296 631016

## **Ellesborough Church**

Treasurer, Paul Couling  
07903 162378

Tower Captain, Mr Les Floyd  
01844 345575

## **Dunsmore Church**

Secretary to the Trustees  
Jacqui Lipton-Rose  
07795 143430

## **Kimble Free Church**

01296 612748

## **Ellesborough Trust**

Debra Panikkar, Chair of  
Ellesborough Trust

Mrs Tracey Davison, Secretary  
07847 969944

## **The Children's Society Box Coordinator**

Zoe Hinton  
01844 761600

## **Community Car**

Booking Co-ordinator  
01296 317769

## **Community Speedwatch**

Alan Cripps  
[acripps27@gmail.com](mailto:acripps27@gmail.com)

## **Risborough Area Community Bus**

Co-ordinator  
01296 963097

## **Poppy Appeal**

Fiona Tchen  
[fiona@tchen.com](mailto:fiona@tchen.com)  
07747 614686

## Ellesborough Magazine

**Chairman**, Mr Richard Jennings  
01296 625498

## **Editor**

[edellesboroughmgz@gmail.com](mailto:edellesboroughmgz@gmail.com)

**Distribution**, Mrs Janette West  
01296 696688

**Secretary**, Judith Harper  
01296 622033

**Advertising**, Annabelle  
[ellesboroughmagazine@hotmail.co.uk](mailto:ellesboroughmagazine@hotmail.co.uk)

**Ellesborough Magazine online**  
[www.ellesborough-pc.gov.uk](http://www.ellesborough-pc.gov.uk)

## Village Communications

### KEEP IN TOUCH

**Ellesborough magazine**  
4 times a year

**Ellesborough magazine online**  
[ellesborough-pc.gov.uk](http://ellesborough-pc.gov.uk)

**Parish council update**  
[clerk@ellesborough-pc.gov.uk](mailto:clerk@ellesborough-pc.gov.uk)  
email clerk to be on list

### **Facebook**

Your Ellesborough

### **WhatsApp**

Ellesborough Follies – private  
& informal village group  
contact Amanda by email  
[ellesboroughfollies@gmail.com](mailto:ellesboroughfollies@gmail.com)  
providing your full name,  
contact number and address.

# Ellesborough Magazine Advertising Rate Card 2026

Quarterly, hand delivered to 500 households in Ellesborough, Butlers Cross, Dunsmore, Nash Lea & Terrick.

Page	Approx size	Orientation	1 Issue	1 year - 10%
Full A4	A4 (Full page)	Portrait	£71	£256
Half A5	A5 (notepad)	Landscape	£45	£163
Quarter A6	A6 (postcard)	Portrait	£29	£106
Business A7	A7 (business card)	Landscape	£21	£74



**All prices given are for coloured ads.**

**Yearly Subscription Offer:**

Advance payment entitles a 10% discount for all four issues.

**Cover Pages:**

Plus 25%, "first come, first served" basis. Half or full page ads only.

**Contact:**

Correspondence and all copy to Annabelle Hunting at [ellesboroughmagazine@hotmail.co.uk](mailto:ellesboroughmagazine@hotmail.co.uk)



## COMPUTER TROUBLE?



# WENDOVER COMPUTERS

Back Street, Wendover 01296 200275

*Do you feel like throwing your computer out of the window?  
fed up with it going slow?  
Crashing or freezing?  
Strange messages popping up?  
or would you just like to upgrade?*



Come and check out the Wendover Computers refurbished station. We stock iPads, iPhones, iMacs, Macbooks, PCs and Laptops

Speed up your slow Computer with an SSD  
Significantly improve the performance of computer by upgrading the old HDD



iPhone & iPad repairs  
anything from smashed screens to battery replacements



Brand new Dell Laptop  
Windows 11  
SSD



[help@wendover-computers.co.uk](mailto:help@wendover-computers.co.uk) [www.wendover-computers.co.uk](http://www.wendover-computers.co.uk)



# ANTIQUES AT .. WENDOVER

Antiques Centre – Established 1987



Pair of Circa  
1850 Muff  
Pistols £750



Open 7 Days a Week

10am – 5.30pm Monday to Saturday

11am – 5.00pm Sunday and Bank Holidays

Car Park, Tea Room, Barn shops and Gallery

Antiques At .. Wendover, The Old Post Office, 25 High Street, Wendover, Bucks. HP22 6DU  
www.antiquesatwendover.co.uk 01296 625335



**Audited, Vetted  
& Approved** by the  
Buckinghamshire County Council  
Trading Standards

"Excellent value for money"  
"Fantastic work" "Totally reliable &  
trustworthy" "Meticulous attention  
to detail" "First rate personal  
service" "Always professional"  
"Conscientious, diligent &  
courteous"

INDUSTRIAL | COMMERCIAL | DOMESTIC

## M. SIMMONDS Decorating Contractors

A Complete Painting & Decorating Service

Family Business Established Since 1979 we pride  
ourselves as one of the best in the business

- Expertise in painting, decorating and wallpapering
- Specialist in all Interior and Exterior work
- Full carpentry and repair service
- We can take care of all your modernisation and  
refurbishment plans, undertaking and overseeing all  
plastering and small electrical work

CALL NOW for a FREE ESTIMATE, and put us to the test



**T 01296 655774 M 07850 499795**

**E michael@msimmonds.co.uk www.msimmonds.co.uk**

f thehairystick @thehairystick msimmonds\_decorating in M Simmonds Decorating Ltd

Approved, fully trained & qualified. Office: Hobbs Barr, Klee Close, Quinton HP22 4AF

**Craftsmen Decorators**  
**Carpentry & Repairs**  
**Refurbishment**